

## RESEARCH ARTICLE

# Are lizards sensitive to anomalous seasonal temperatures? Long-term thermobiological variability in a subtropical species

André Vicente Liz<sup>1‡\*</sup>, Vinicius Santos<sup>1</sup>, Talita Ribeiro<sup>2</sup>, Murilo Guimarães<sup>1</sup>, Laura Verrastro<sup>1</sup>

**1** Programa de Pós-Graduação em Biologia Animal, Departamento de Zoologia, Instituto de Biociências, Universidade Federal do Rio Grande do Sul, Porto Alegre, Rio Grande do Sul, Brazil, **2** Programa de Pós-Graduação em Ecologia, Departamento de Ecologia, Instituto de Biociências, Universidade Federal do Rio Grande do Sul, Porto Alegre, Rio Grande do Sul, Brazil

‡ Current address: CIBIO/InBIO, Research Center in Biodiversity and Genetic Resources, University of Porto, Vairão, Portugal

\* [andre.vicente.liz@cibio.up.pt](mailto:andre.vicente.liz@cibio.up.pt)



## OPEN ACCESS

**Citation:** Vicente Liz A, Santos V, Ribeiro T, Guimarães M, Verrastro L (2019) Are lizards sensitive to anomalous seasonal temperatures? Long-term thermobiological variability in a subtropical species. PLoS ONE 14(12): e0226399. <https://doi.org/10.1371/journal.pone.0226399>

**Editor:** William David Halliday, Wildlife Conservation Society Canada, CANADA

**Received:** July 8, 2019

**Accepted:** November 26, 2019

**Published:** December 19, 2019

**Copyright:** © 2019 Vicente Liz et al. This is an open access article distributed under the terms of the [Creative Commons Attribution License](https://creativecommons.org/licenses/by/4.0/), which permits unrestricted use, distribution, and reproduction in any medium, provided the original author and source are credited.

**Data Availability Statement:** All field data used in this study are available from the Digital Library of the Universidade Federal do Rio Grande do Sul (LUME - UFRGS; <https://lume.ufrgs.br/>) and the website of the Herpetology Lab at Universidade Federal do Rio Grande do Sul (<http://www.ufrgs.br/herpetologia/>).

**Funding:** This work was supported by research fellowships from the Coordenação de Aperfeiçoamento de Pessoal de Nível Superior – Brazil (<http://www.capes.gov.br/>) Postgraduate

## Abstract

Alterations in thermal niches have been widely associated with the Anthropocene erosion of reptiles' diversity. They entail potential physiological constraints for organisms' performance, which can lead to activity restrictions and impact fitness and demography. Reptiles are ectotherms which rely on seasonal periodicity to maximize the performance of biological functions. Despite it, the ecological implications of shifts in local temperatures are barely explored at the seasonal scale. This study aims to assess how changes in air temperature and substrate temperature affect the activity, body temperature ( $T_b$ ) and thermoregulation patterns of the sand lizard, *Liolaemus arambarensis* (an endangered, microendemic species from southern Brazil), throughout a four-year period. Field surveys were conducted monthly on a restricted population in a sand-dune habitat. The annual fluctuations of the seasonal temperatures led to significant changes in the activity and  $T_b$  of *L. arambarensis* and shaped thermoregulation trends, suggesting biological plasticity as a key factor in the face of such variability. Lizards tended to maintain seasonal  $T_b$  in mild and harsh seasons through increased warming/cooling efforts. Anomalous winter conditions seemed especially critical for individual performance due to their apparent high impact favouring/constraining activity. Activity and thermoregulation were inhibited in frigid winters, probably due to a vulnerable physiology to intense cold spells determined by higher preferred body temperatures than  $T_b$ . Our results warn of a complex sensitivity in lizards to anomalous seasonal temperatures, which are potentially enhanced by climate change. The current work highlights the importance of multiannual biomonitoring to disentangle long-term responses in the thermal biology of reptiles and, thereby, to integrate conservation needs in the scope of global change.

scholarship – AVL; and Postdoctoral scholarship – MG; financial code 001). Financial support was provided by the Universidade Federal do Rio Grande do Sul – Postgraduate program in Animal Biology (<https://www.ufrgs.br/ppgban/>); the European Commission through the program Erasmus Mundus Master Course – International Master in Applied Ecology (<http://www.emmc-ima.org/>); and the Celulose Riograndense (<http://cmpcbrasil.com.br/>). The funders had no role in study design, data collection and analysis, decision to publish, or preparation of the manuscript.

**Competing interests:** The authors have declared that no competing interests exist.

## Introduction

For almost two decades, we have been aware that reptiles are globally declining and that climate change is a major driving factor [1,2]. Reptiles are greatly constrained by external temperatures due to their need to thermoregulate [3,4], which makes them very susceptible to environmental changes and anthropogenic impacts [5,6]. Their physiology (e.g. metabolic rate), phenology (e.g. reproduction onset, voltinism), ecological relations and other life-history traits (e.g. growth, sexual maturity, longevity) are sensitive to thermal shifts, being important factors associated with populations' persistence [7–11]. In this respect, various studies have forecasted multiple population and species extinctions within the century, due to alterations in local thermal niches [8,12–14]. Understanding reptiles resilience and plasticity towards thermal changes has become, therefore, imperative for integrative conservation [15,16].

Global warming is possibly the most blatant phenomenon stemming from the climatic alterations in the Anthropocene. Large-scale predictions on demographic declines (e.g. [12,14,17]) and models of climate change buffering (e.g. [18,19]) generally agree about the response of reptiles to increasing temperatures. However, while the impact of global warming on biodiversity is widely acknowledged, other effects of climate change may be overlooked (e.g. extreme weather spells or seasonal climate distortions; [16,20,21]). Alterations in seasonal temperatures are notable phenomena [22–25], though their biological implications remain unexplored.

In order to optimise their biological activities [3,4], reptiles correlate their activity and body temperature ( $T_b$ ) patterns with seasonal dynamics of environmental temperatures [26–28], which are often closely related to their phenological traits. Temperatures approaching organisms' tolerance thresholds may impose serious challenges to their thermoregulation capacities and prompt physiological instability, leading to activity limitations [3,4]. Reductions in the available foraging or mating time have severe ecological implications and negatively impact fitness, demography and distribution range [14,29–31]. Biological consequences may be especially severe at certain stages of the organism's annual cycle, such as the reproductive season or in gonad growth and gametogenesis peaks, when foraging limitation becomes a major threat due to increasing energy demands [29,32,33].

Lizards are among the most sensitive reptiles to climate change [2,14,17,34–37]. As behavioural thermoregulators, they adjust their  $T_b$  by interacting with external heat sources and by performing combinations of specific actions, such as adjustment of activity periods, body positions and postures, as well as their microhabitat use [7,38,39]. Species whose  $T_b$  balance mostly depends on substrate temperatures are thigmothermic, while those primarily relying on solar irradiation are heliothermic. Moreover, species range from marked thermoregulators to thermoconformers and from thermal generalists to thermal specialists, according to their thermoregulatory capabilities and thermal sensitivities. Such traits characterize the thermal biology of a species, which is a combination of historical factors (i.e. phylogeny) and adaptations to particular environments [3]. Thermobiological features follow a complex, continuum range and may vary along with external conditions, allowing individuals to minimize associated costs [39,40].

Microendemic lizards are particularly exposed to thermal alterations because they restrict their thermal preferences to the local niches available within a limited space, and are often unable to colonize new suitable habitats [18, 34,41]. Tropical and subtropical species living at low altitudes are also highly vulnerable, due to the presumed strong impact of global warming on these latitudes [14,25,35]. Despite this, the thermal biology of neotropical lizards has been rarely assessed in relation to trends in climate variability. *Liolaemus* spp. (Wiegmann, 1883) represent one of the most remarkable adaptive radiations among Squamata reptiles. These

organisms colonized a wide array of South American habitats and combine a largely diverse taxonomy (>250 species), ecology, morphology and life-story traits, which makes them excellent models for addressing evolutionary and ecological questions [42]. Yet, while *Liolaemus* thermal biology has been targeted in species from cold, extreme environments in the Andes and Patagonia [43–45], other regions remain understudied. Besides, the lack of long-term assessments constrains unlocking potential uncharted aspects of its adaptive evolution, despite the lability of *Liolaemus*  $T_b$  in comparison to preferred body temperatures ( $T_{pref}$ ).

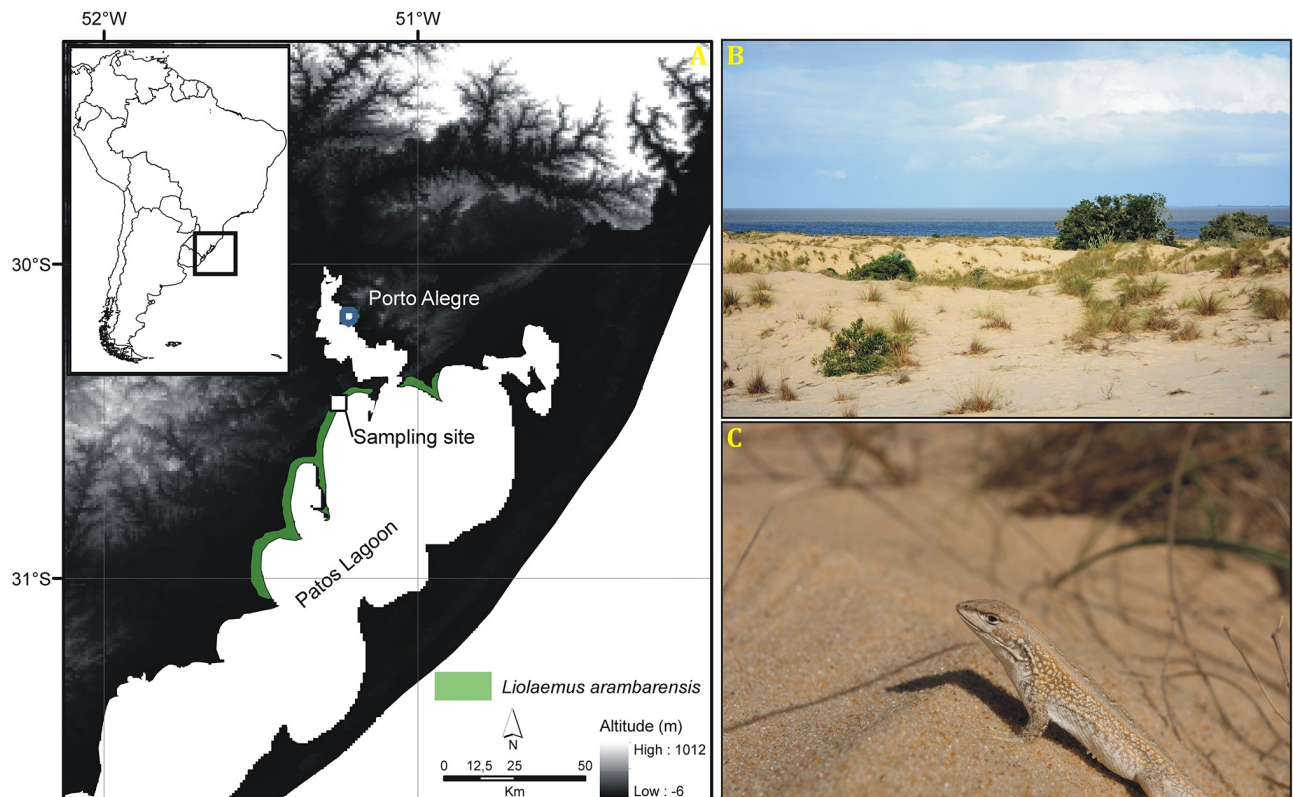
Biomonitoring constitutes a useful, although uncommon, mechanism to track changes in animal-environment interactions across different time scales [46]. This study presents a multi-annual, year-round approach to the thermal biology of the subtropical, microendemic sand lizard, *L. arambarensis*. Specifically, we assess potential changes in the influence of air temperature ( $T_a$ ) and substrate temperature ( $T_s$ ) on species activity and  $T_b$  patterns throughout the annual cycle, between years and in specific seasons over different years. We tested the following hypotheses: (1) lizard activity and  $T_b$  patterns align with the dynamics of environmental temperatures, defined here as air and surface temperatures, across the annual cycle; (2) the relative influence of  $T_a$  and  $T_s$  on lizard's  $T_b$  balance changes in cold and warm seasons; (3) lizards present higher activity in thermally mild seasons compared to thermally harsh seasons (i.e. year-to-year comparisons of the same season); (4) lizards present similar  $T_b$  and different levels of active thermoregulation between mild and severe seasons.

## Material and methods

### Study species and site

*Liolaemus arambarensis* ([47]; Fig 1) is a diurnal, sand-burying lizard from southern Brazil, being one of the two endemic reptiles within the State of Rio Grande do Sul. It occurs in few subtropical restingas (i.e. dry, sandy, sunny areas partially covered by patches of grasses and shrubby plants) at the western margin of the Patos Lagoon, which is the largest barrier-lagoon in South America, located on the Coastal Plain of Rio Grande do Sul (Fig 1). The species is associated with Poaceae grasses, which are mainly used for thermoregulation, predator avoidance and foraging. It is an ambush predator with an omnivorous diet (namely vegetation and arthropods), and presents an oviparous reproductive mode with a well-defined reproductive season between September and March (austral spring and summer). The International Union for Conservation of Nature (IUCN; [48]) lists *L. arambarensis* as Endangered. The major factors threatening its persistence are habitat loss and fragmentation, magnified by the lack of new suitable areas to disperse. Only five populations of *L. arambarensis* are known to exist, and no individuals have been observed in the last 12 years at the location of the southernmost population [49]. Evidences suggest that populations are genetically isolated due to the lack of continuous sand connections between localities [50].

Field work was conducted in a restinga habitat within the Reserva Particular do Patrimônio Natural Estadual (RPPN) Barba Negra; Celulose Riograndense, municipality of Barra do Ribeiro, Rio Grande do Sul, Brazil (30°24'43"S, 51°13'03"W; 12 m a.s.l.; datum WGS84, Fig 1). It is a private conservation unit with limited human activities and which comprises a spatial niche of sandy areas partially covered by herbaceous and shrubby vegetation, which is adapted to well-drained soils, heat, slight wind and high substrate temperatures resulting from intense solar irradiation [51]. Climate is subtropical humid (type Cfa from Köppen's classification; mean annual rainfall: 1100–1300 mm; mean annual temperature: 16–18 °C; [52]) with four austral, well-defined seasons. For our study, we selected an area of approximately 1.6 ha with no apparent anthropogenic impact, a relatively high population density [49] and the main



**Fig 1. Study area and species.** (A) The dark-grey square corresponds to the sampling site, in the RPPN Barba Negra, Barra do Ribeiro, RS, Brazil. The white-grey striped area represents the distribution of *Liolaemus arambarensis*. (B) Image of the study area. (C) Adult specimen of *L. arambarensis* from the study area.

<https://doi.org/10.1371/journal.pone.0226399.g001>

habitat features used by the species (vegetated areas, bare sandy areas, windy areas and windless areas). The Celulose Riograndense granted access to the study site.

### Field sampling

We conducted active searches [53] on a monthly basis from January 2013 to December 2016, looking for individuals on two sunny days between 07:00h and 18:00h (BRT). Accordingly, surveying occurred throughout the whole activity period of the species [47]). Each survey was performed along the same spatial transect (approximate length of 500 m), at consistent walking speeds with an equal number of field assistants, in order to maintain standard levels of sampling effort. Active individuals (i.e. moving and not static; see [54]) were found basking or dislocating on the sand surface, within isolated vegetation patches or buried under the sand. After detection, they were captured by hand. Immediately after capture, we recorded the following information: i)  $T_b$ , individual's cloacal temperature; ii)  $T_a$ , temperature 5cm above ground level; iii)  $T_s$ , temperature at the sand surface and; iv) exact time of detection. Measurements were made using a quick-reading cloacal thermometer Minipa MT-455<sup>®</sup> (precision 0.1 °C), avoiding direct exposure of the instrument to sunlight. All individuals were marked by toe clipping before release, thus avoiding measurement of the same specimen twice in the same sampling day. Despite certain concerns about this practise, toe clipping is generally accepted for small-sized lizards because of its effectiveness, especially in long-term monitoring, low cost and reduced levels of imposed stress in comparison to other marking techniques,



such as pit-tagging [55–57]. Individuals recaptured in different months and years were included in the study since we considered they provided independent information. All research protocols were approved by the Ethics Committee in the Use of Animals from the Universidade Federal do Rio Grande do Sul (CEUA/UFRGS, protocol 22984), and the Chico Mendes Institute for Biodiversity Conservation through the Permit and Information System on Biodiversity (ICMBio/SISBIO, reference 12613–1).

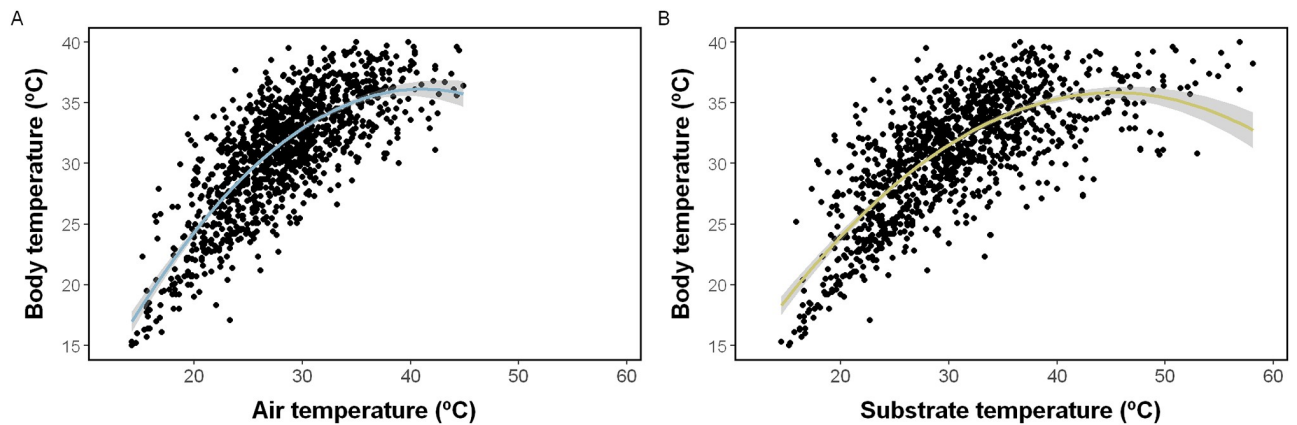
## Data analysis

Records of  $T_b$ ,  $T_a$  and  $T_s$  ( $N = 1229$  each) were classified according to season and year. Activity observations were defined as the number of active lizards captured for each sampling event ( $N = 42$ ), and were classified according to the season and year.

To assess *hypothesis 1*, we tested for seasonal and annual differences of activity,  $T_b$ ,  $T_a$  and  $T_s$ , using parametric tests based on our large sample sizes and visual inspections on data; [58]), and we verified the influence of  $T_a$ ,  $T_s$ , season and year on activity and  $T_b$ , fitting Generalized Linear Models with normal errors (GLMs; [58]). The thermal environments (i.e.  $T_a$  and  $T_s$ ) were highly correlated (Pearson's correlation,  $r = 0.781$ ,  $p < 0.001$ ) but were still included in the study and analysed separately, as each may have contributed relevant information for the purpose of the study. Accordingly, we fitted two GLMs–Poisson regression (one including  $T_a$  and the other including  $T_s$ ) using activity as the response variable, and two GLMs–Gaussian regression with quadratic adjustment (one including  $T_a$  and the other including  $T_s$ ) using  $T_b$  as the response variable. In every case, we started from models containing all explanatory variables and the interactions between the temporal predictors. Then, we tested for non-significant interactions in order to obtain the most parsimonious models explaining activity and  $T_b$  variations. The Akaike Information Criterion (AIC; [59]) was used to compare the final models fitted for each response variable, in order to determine which thermal environment was more important in explaining the variations. For each model, we evaluated data dispersion and the distribution of residual values.

To assess the relative influence of each thermal environment on  $T_b$  variations, we calculated the difference between  $T_b$  and  $T_a$  ( $\Delta T_a = T_b - T_a$ ) and between  $T_b$  and  $T_s$  ( $\Delta T_s = T_b - T_s$ ), following the same methodology implemented in other studies of thermal biology conducted on Brazilian reptiles (e.g. [60–62]). Higher absolute values of  $\Delta T$  indicate a higher level of active thermoregulation, using the thermal environment. Although this is not one of the most established indexes of thermoregulation, it allows comparing the relative importance of each thermal environment on  $T_b$  balance across different time scales and, thereby, it contributes to address our study purposes (*hypothesis 2, 4*).

To test *hypotheses 3 and 4*, relatively mild and harsh seasons were defined according to  $T_a$ , using as upper/lower cutoffs the sum/difference between the overall seasonal means and half of the seasonal standard deviations. Annual means of summers/springs and autumns/winters exceeding, respectively, the upper and lower thresholds were considered harsh seasons; conversely, annual means of summers/springs and autumns/winters exceeding, respectively the lower and upper thresholds were considered mild seasons. We tested for significant differences between the  $T_a$  of mild/harsh seasons, using parametric tests. To aide interpretations of the species thermal biology in extreme seasons, we used historical records of seasonal temperatures in the region. For this aim, monthly mean values of maximum, average and minimum temperatures since 1962 (first available records) were recovered from the closest meteorological station (~35 km) to the study site (Porto Alegre–RS; OMM: 83967; 30°05'S, 51°16'W; 47 m a.s.l.; <http://www.inmet.gov.br/portal/index.php?r=bdmep/bdmep>).



**Fig 2. Relationship of  $T_b$  and environmental temperatures.** Quadratic relationship (GLM) of body temperature with (A) air temperature (blue) and (B) substrate temperature (yellow), considering each capture of *Liolaemus arambarensis* (N = 1229). The grey strip refers to the confidence interval (95%).

<https://doi.org/10.1371/journal.pone.0226399.g002>

## Results

Field surveys totalled 462 hours of sampling effort, wherein 1324 active individuals (69 individuals recaptured two times, seven recaptured three times), were captured and included in the study. Lizards were found active throughout the whole sampling period, at any hour of the day and any moment of the annual cycle. The  $T_b$  exhibited by *L. arambarensis* was  $31.03 \pm 4.90$  °C (mean  $\pm$  standard deviation), ranging within 14.8–43.1 °C, while  $T_a$  and  $T_s$  were respectively  $28.29 \pm 5.55$  °C (12.6–44.9 °C) and  $30.76 \pm 7.21$  °C (14.3–58.1 °C). The thermal environments were positively related to  $T_b$  (Fig 2), and contributed to changes in activity (Table 1) and  $T_b$  (Table 2). Out of these,  $T_a$  was more important in explaining  $T_b$  variations

**Table 1. Effect of temporal variability and thermal environments on lizards' activity.** GLMs of the effect of seasons and years, and of (A) air temperature or (B) substrate temperature, on the activity of *Liolaemus arambarensis*, considering N = 42 sampling events. Significant results are given in bold.

A	Coefficient	SE	z	p	B	Coefficient	SE	Z	p
Intercept	3.44	0.10	33.94	$<2e^{-16}$	Intercept	3.45	0.10	34.08	$<2e^{-16}$
Air temperature	0.26	0.06	4.06	$4.97e^{-05}$	Substrate temp.	0.29	0.06	4.62	$3.8e^{-06}$
Spring	-0.21	0.15	-1.43	0.153	Spring	-0.28	0.15	-1.85	0.064
Summer	0.12	0.15	0.77	0.442	Summer	0.19	0.15	1.24	0.214
Winter	-0.66	0.20	-3.25	<b>0.001</b>	Winter	-0.59	0.21	-2.86	<b>0.004</b>
2014	0.19	0.14	1.37	0.174	2014	0.14	0.14	0.99	0.321
2015	0.30	0.13	2.26	<b>0.024</b>	2015	0.35	0.14	2.57	<b>0.010</b>
2016	-0.54	0.19	-2.75	<b>0.006</b>	2016	-0.49	0.19	-2.53	<b>0.012</b>
Spring:2014	0.10	0.20	0.48	0.632	Spring:2014	0.20	0.20	0.99	0.322
Spring:2015	0.19	0.20	0.97	0.333	Spring:2015	0.17	0.19	0.86	0.392
Spring:2016	0.65	0.25	2.59	<b>0.010</b>	Spring:2016	0.56	0.25	2.22	<b>0.026</b>
Summer:2014	-0.68	0.23	-2.92	<b>0.004</b>	Summer:2014	-0.62	0.23	-2.75	<b>0.006</b>
Summer:2015	-0.13	0.23	-0.57	0.569	Summer:2015	-0.30	0.24	-1.24	0.216
Summer:2016	0.30	0.25	1.23	0.219	Summer:2016	0.25	0.25	0.60	0.552
Winter:2014	0.36	0.24	1.49	0.137	Winter:2014	0.23	0.24	0.96	0.336
Winter:2015	0.68	0.25	2.74	<b>0.006</b>	Winter:2015	0.54	0.25	2.13	<b>0.033</b>
Winter:2016	0.73	0.30	2.40	<b>0.016</b>	Winter:2016	0.71	0.30	2.35	<b>0.019</b>

Residual deviance: 46.164 (df = 25) | AIC: 297.56 Residual deviance: 41.259 (df = 25) | AIC: 292.65

<https://doi.org/10.1371/journal.pone.0226399.t001>

**Table 2. Effect of temporal variability and thermal environments on lizards'  $T_b$ .** GLMs of the effect of seasons and years, and of (A) air temperature or (B) substrate temperature, on the body temperature of *Liolaemus arambarensis*, considering N = 1228 captures. Significant results are given in bold.

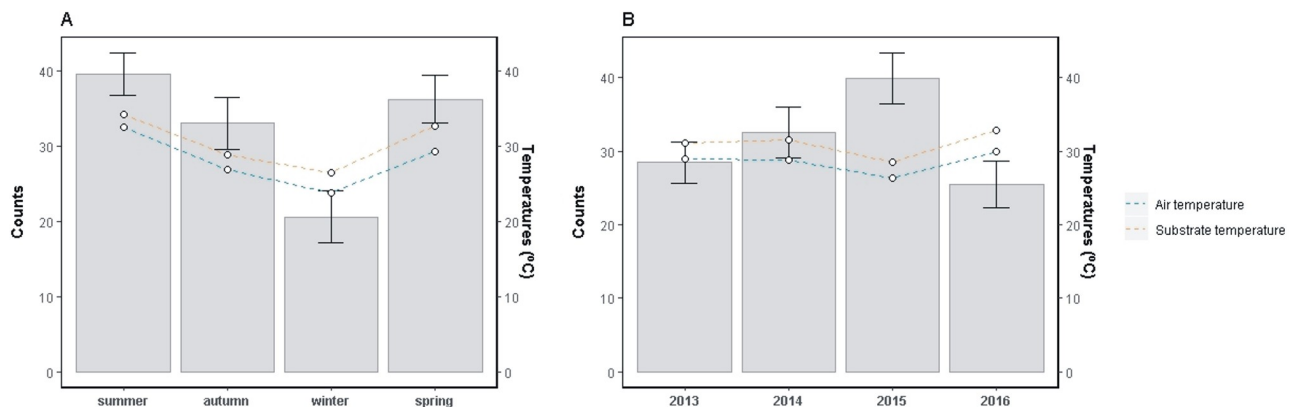
A	Coefficient	SE	t	p	B	Coefficient	SE	T	p
Intercept	32.47	0.28	117.28	$<2e^{-16}$	Intercept	32.88	0.29	113.03	$<2e^{-16}$
Air temperature	3.51	0.10	34.00	$<2e^{-16}$	Substrate temp.	3.33	0.10	32.00	$<2e^{-16}$
Air temperature <sup>2</sup>	-0.67	0.06	-11.23	$<2e^{-16}$	Substrate temp. <sup>2</sup>	-0.85	0.06	-15.17	$<2e^{-16}$
Spring	-0.19	0.40	-0.48	0.632	Spring	0.23	0.41	0.55	0.583
Summer	0.49	0.43	1.15	0.250	Summer	1.15	0.45	2.59	<b>0.010</b>
Winter	-0.55	0.54	-1.02	0.306	Winter	-1.00	0.56	-1.78	0.075
2014	-2.41	0.38	-6.28	<b><math>4.79e^{-10}</math></b>	2014	-3.27	0.40	-8.21	<b><math>5.76e^{-16}</math></b>
2015	-2.56	0.37	-7.02	<b><math>3.76e^{-12}</math></b>	2015	-2.78	0.38	-7.34	<b><math>3.92e^{-13}</math></b>
2016	-1.82	0.54	-3.36	<b><math>8.07e^{-04}</math></b>	2016	-1.55	0.56	-2.79	<b>0.005</b>
Spring:2014	2.05	0.56	3.67	<b><math>2.50e^{-04}</math></b>	Spring:2014	2.66	0.58	4.59	<b><math>5.01e^{-06}</math></b>
Spring:2015	3.41	0.53	6.42	<b><math>2.01e^{-10}</math></b>	Spring:2015	2.11	0.55	3.83	<b><math>1.35e^{-04}</math></b>
Spring:2016	2.73	0.75	3.66	<b><math>2.62e^{-04}</math></b>	Spring:2016	0.86	0.77	1.12	0.265
Summer:2014	1.30	0.62	2.10	<b>0.036</b>	Summer:2014	2.59	0.64	4.07	<b><math>5.01e^{-05}</math></b>
Summer:2015	0.56	0.63	0.88	0.377	Summer:2015	0.67	0.66	1.02	0.310
Summer:2016	1.74	0.68	2.55	<b>0.011</b>	Summer:2016	1.44	0.71	2.02	<b>0.043</b>
Winter:2014	1.84	0.66	2.79	<b>0.005</b>	Winter:2014	1.19	0.69	1.73	0.083
Winter:2015	2.61	0.67	3.93	<b><math>9.12e^{-05}</math></b>	Winter:2015	2.73	0.69	3.94	<b><math>8.76e^{-05}</math></b>
Winter:2016	-1.99	0.93	-2.15	<b>0.032</b>	Winter:2016	-2.69	0.97	-2.78	<b>0.005</b>

Residual deviance: 9012.3 (df = 1210) | AIC: 5970.6 Residual deviance: 9790.5 (df = 1210) | AIC: 6072.3

<https://doi.org/10.1371/journal.pone.0226399.t002>

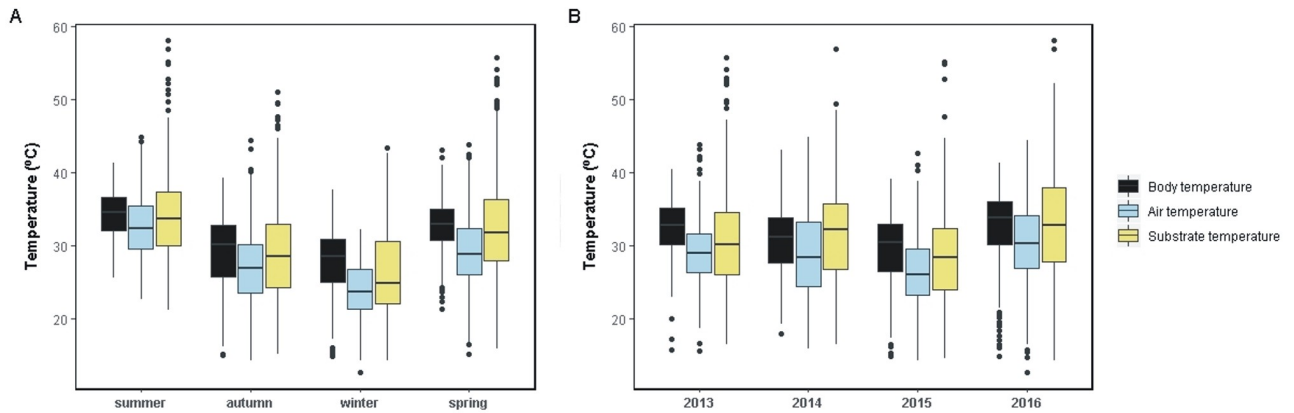
( $\Delta AIC = 101.7$ ; Table 2), and  $T_s$  in relation to activity variations ( $\Delta AIC = 4.91$ ; Table 1). The  $\Delta T_a$  ( $2.74 \pm 3.64$  °C) was higher than the  $\Delta T_s$  ( $0.27 \pm 5.19$  °C; ANOVA:  $F_{1,1227} = 471.34$ ,  $p < 0.001$ ).

Lizards' activity presented peaks during summer and significant drops in winter (Fig 3, S1 Fig, S1 and S2 Tables). Bimodal daily activity patterns with midday shrinks were recorded in spring and summer (S2 Fig). Similarly,  $T_b$  and the thermal environments were warmest during summer, followed by spring, autumn and winter (Fig 4, S1 Fig, S1 and S2 Tables). The  $\Delta T_a$  and  $\Delta T_s$  were largest in winter and smallest in summer, although differences were strongly



**Fig 3. Seasonal and annual variations in activity, in relation to environmental temperatures.** Bar charts with error bars show the mean seasonal (A) and annual (B) activity, in relation to mean values of air temperature (blue) and substrate temperature (yellow), considering each capture of *Liolaemus arambarensis* (N = 1324).

<https://doi.org/10.1371/journal.pone.0226399.g003>

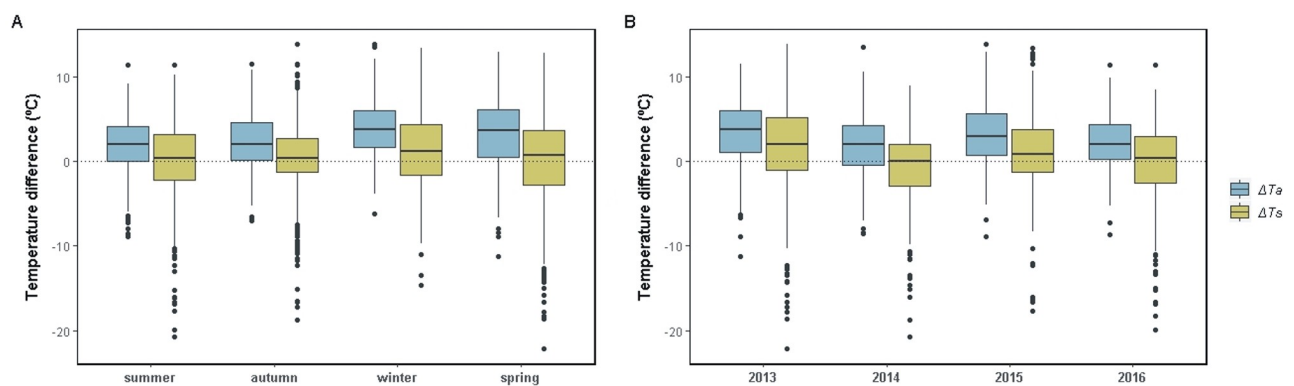


**Fig 4. Seasonal and annual variations in  $T_b$  and environmental temperatures.** Boxplots show the seasonal (A) and annual (B) variations in body temperature (black), air temperature (blue) and substrate temperature (yellow), considering each capture of *Liolaemus arambarensis* (N = 1229).

<https://doi.org/10.1371/journal.pone.0226399.g004>

significant ( $p < 0.01$ ) only in the former (Fig 5, S1 and S2 Tables). Mean annual values reflected unconnected trends between activity and the thermal environments, as the former was high when the latter were lowest, in 2015 (Fig 3, S1 and S2 Tables). Conversely, inter-annual  $T_b$  variation was consistent with  $T_a$  and  $T_s$ , being highest in 2013 and 2016, followed by 2014 and lowest in 2015 (Fig 4, S1 and S2 Tables). The  $\Delta T_a$  and  $\Delta T_s$  were higher in 2013 and 2015, and lower in 2014 and 2016 (Fig 5, S1 and S2 Tables).

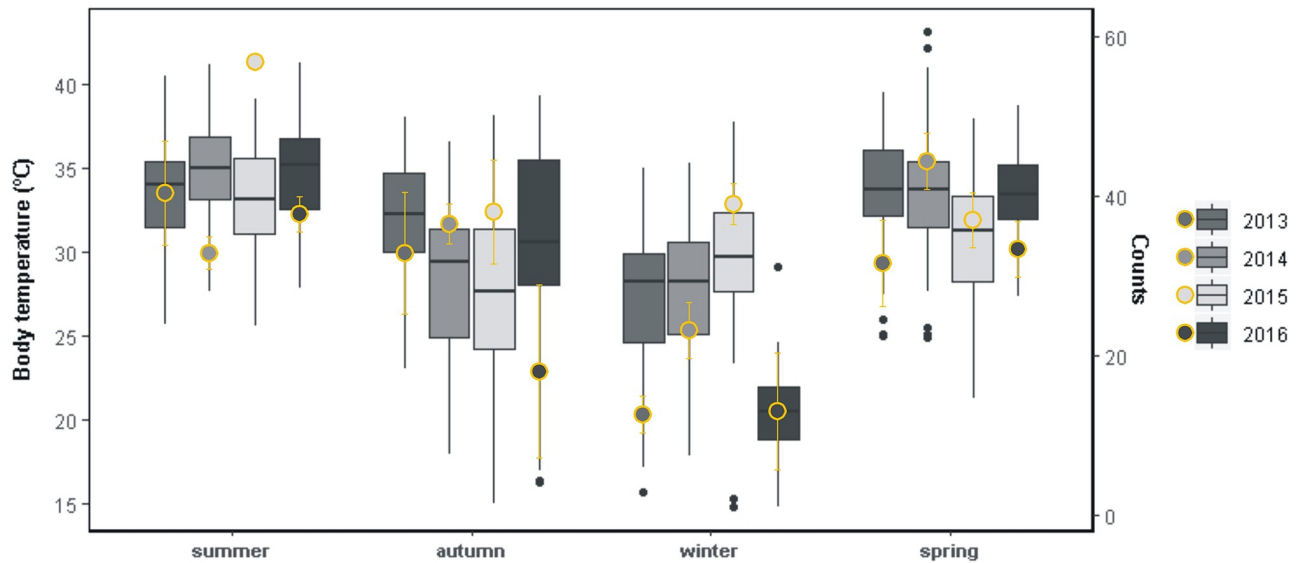
Inter-annual shifts in seasonal activity and  $T_b$  (Fig 6, S3 Table) were consistent with the variability of seasonal environmental temperatures (S1 and S3 Figs, S3 and S4 Tables). Mild seasons were summer 2013, spring and winter 2015, and autumn 2016 (S3 and S4 Tables). Significant increases in seasonal activity and  $T_b$  were recorded in the mild winter, with no other deviations revealed but a  $T_b$  decrease in the mild spring (Fig 6, S3 and S4 Tables). Seasonal  $\Delta T_a$  and  $\Delta T_s$  were greatest, respectively, in the mild summer/spring and in the mild autumn/winter (S4 Fig, S3 Table). Harsh seasons were summer and spring 2014, and winter 2016 (S3 Fig, S3 and S4 Tables). Seasonal activity and  $\Delta T_a$  were minimal in the harsh summer while  $T_b$  was conserved (Fig 6, S4 Fig, S3 and S4 Tables), and no changes were observed in the harsh spring (if any, higher seasonal activity). Winter 2016 was extreme (in June: lowest maximum temperature, third lowest average temperature and top-10 lowest minimum temperature



**Fig 5. Seasonal and annual variations in active thermoregulation.** Boxplots show the differences between body temperature and air temperature ( $\Delta T_a$ ; blue) and between body temperature and substrate temperature ( $\Delta T_s$ ; yellow) for each season (A) and year (B), considering each capture of *Liolaemus arambarensis* (N = 1229).

<https://doi.org/10.1371/journal.pone.0226399.g005>





**Fig 6. Annual variations in seasonal  $T_b$  and activity.** Boxplots show the annual differences in body temperature for each season, considering each capture of *Liolaemus arambarensis* ( $N = 1229$ ). Yellow points with error bars represent the annual means of seasonal activity, considering each capture of *L. arambarensis* ( $N = 1324$ ). Grey shades represent different years.

<https://doi.org/10.1371/journal.pone.0226399.g006>

ever recorded; [S5 Table](#)), matching abrupt decreases in seasonal  $T_b$ , activity ([Fig 6](#); [S3 Table](#)) and  $\Delta T_a$  ([S4 Fig](#), [S3 Table](#)). No other extreme seasons were revealed within the study period. The  $\Delta T_a$  remained higher than the  $\Delta T_s$  in every season within the study period ([S4 Fig](#), [S3 Table](#)).

## Discussion

The activity of *L. arambarensis* from Barra do Ribeiro extended year-round, although underwent winter limitations. In spite of thermal constraints, sustained winter activity likely responds to various interplaying factors: species distribution transiting between mid and low latitudes, avoiding the cold thresholds which prompt winter dormancy in several temperate lizards [63]; small individual size, resulting in high rates of heat gain/loss and consequently in fast warming-up capacity [64,65]; and habitat features, namely the clear, sandy substrate which acts as a primary heat source in sunny, winter days due to its rapid absorption of solar irradiation, and the dune system that provides windless spots. Winter performance in year-round active species holds a crucial biological role associated to foraging and basking time, which optimises reproductive success through strengthened gonad growth and yield, and embryonic development [31,66,67]. High activity in summer and spring and in midday hours provides evidence for a preference for warm conditions, as expected for an ectotherm, although individuals were often exposed to temperatures of over 40 °C that approach their critical thermal maximum ( $CT_{max}$ ) and jeopardize physiological stability [4,38]. Active thermoregulation, revealed by larger differences between  $T_b$  and the thermal environments at high temperatures, and bimodal activity patterns in summer and spring are common strategies to avoid overheating. Selective microhabitat use, namely midday sheltering in vegetated patches, may also allow evading critical sunlight and sand temperatures while enhancing predator avoidance and foraging [47,68]. The activity patterns of *L. arambarensis* are consistent with other lizards dwelling in restingas from southern and southeastern Brazil (e.g. *L. occipitalis*, *L. lutzae*; [69,70]).

The  $T_b$  of *L. arambarensis* showed large amplitude and followed the dynamics of environmental temperatures throughout the annual cycle, as expected in a habitat of marked seasonality. Thermoregulation efficiencies are in accordance with the relationship of  $T_b$  to the environmental temperatures, which are used by the lizards to actively adjust their  $T_b$  [3]. Significant effects of  $T_a$  and  $T_s$  on  $T_b$  were observed,  $T_a$  being better at explaining  $T_b$  variations, and  $\Delta T_a$  was higher than  $\Delta T_s$  in every season. Our result suggests a heliothermic strategy for *L. arambarensis*, which is consistent with the rest of the genus [71]. Results at the seasonal level reveal cold-associated increase in  $\Delta T_s$ , which points to an expected, greater importance of the sand substrate as a heat source when this is limited; however, correlation of  $T_b$  and  $T_s$  does not necessarily indicate thigmothermy and may just reflect an overall higher need to thermoregulate during cooler periods.

The annual activity maximum matched with the coldest year 2015, although the within-year assessment reveals that the annual lowest temperature was determined by a fresh spring. In addition, summer maximum temperatures stayed below those of 2014 and 2016, and winter was warm. Mild conditions limited lizards' exposure to their critical thermal limits, likely enhancing activity and facilitating the achievement of optimal temperatures ( $T_o$ ) with low associated costs [4,39]. The increase in winter activity could have favoured survivorship due to high food intake and reduced thermal constraints, especially in juveniles. The sexual maturity of *L. arambarensis* occurs in the breeding season that follows birth, thus survival of young individuals is crucial for reproduction [47]. Although activity may only be weakly connected to demographic trends, the higher levels of 2015 could be translated in population expansion, derived from a strong recruitment of juveniles during an ecologically-favourable breeding period in spring-summer, and high survival rate and strengthened gonad growth and gamete development in winter [31,66,67]. Demographic analyses would enlighten this hypothesis. The other mild seasons within the study period did not differ from the average, although  $\Delta T_a$  was high in the fresh summer, as well as in the mild spring, suggesting increased efforts to achieve  $T_o$  during the peak of ecological functions, especially the breeding period.

The thermal physiology of *Liolaemus* lizards is highly labile, where  $T_b$  reflects adaptation to local conditions [43–45]. Accordingly, the  $T_b$  of *L. arambarensis* (31.0 °C) differed from other *Liolaemus* species as a function of habitat divergence even for close lineages such as *L. salinicola* (36.7 °C), and resembled that of resting-dwelling species such as *L. occipitalis* (30.9 °C) and *L. lutzae* (31.7 °C; [44,70,72]). [73] and [70] revealed differences in *Liolaemus*  $T_b$  also at the intra-specific level. In turn,  $T_{pref}$  within the genus seem historically conserved within a range of 34–37 °C, and systematically exceed species  $T_b$  [44], especially in subtropical and temperate species; in contrast, [43] pointed to a low phylogenetic conservatism of  $T_{pref}$ . By inference, the operative temperatures ( $T_e$ ) experienced during activity are ostensibly lower than  $T_{pref}$ . The evolution of lower  $T_b$  likely allowed wider daily and seasonal activity periods in cool environments, increasing foraging time. This may provide *Liolaemus* lizards with a safe physiological margin to buffer global warming [41,44], but subtropical and temperate species may be vulnerable to intense cold spells.

The frigid temperatures of winter 2016, when minimal activity,  $T_b$  and  $\Delta T$  were observed, presumably inhibited activity of *L. arambarensis* and hampered thermoregulation to approach  $T_o$ . The lowest  $T_b$  records were around 15 °C, staying above the critical thermal minimum ( $CT_{min}$ ) of *Liolaemus* lizards [43]. Yet, active individuals were seldom captured with environmental temperatures below 16–17 °C, supporting a thermal cutoff for activity onset slightly below 20 °C, similar to that proposed by [74] for the closely-related *L. wiegmanni* [72]. Winter activity restrictions may imperil population persistence because foraging and basking time is reduced, leading to failed energy intakes that underpin reproductive physiology [31,66,67]. Species range can be also reduced due to activity restrictions, with a drastic effect on

microendemisms [15,29,30]. The lability of *Liolaemus* thermal physiology suggests that *L. arambarensis* evolved strong specificity to the features of the dune system wherein it is restricted, becoming highly specialized to the local thermal niches. The impact of extreme winter temperatures on activity and  $T_b$  reflects a negative response against adverse conditions, which could entail a major threat due to the restricted distribution of the species [29,30,41]. Although warming is the main climate change-induced effect that impacts the seasonal scale [23,25], recent evidence has also pointed at frigid winters as potentially recurrent events at mid northern latitudes [22,24,75]. The way that the frequency and magnitude of extreme winter spells will change in the study area is uncertain, yet our results suggest that they can induce drastic activity restrictions in *L. arambarensis*. In contrast to extreme cold, the conservation of seasonal  $T_b$  in the harsh summer synchronized with relative decreases in activity and  $\Delta T_a$  could reflect a cooling response against overheating. However, this pattern was not evident when compared to winter shifts.

Overall, the activity and  $T_b$  of *L. arambarensis* aligned with seasonal fluctuations, yet the inter-annual variability of seasonal environmental temperatures shaped their long-term patterns. Fluctuations seem to be especially relevant in winter, due to their apparent high impact favouring/limiting lizards' performance. Lizards maintain seasonal  $T_b$  in harsh seasons through increasing thermoregulation efforts and even adjusting activity, but extreme cold spells seem to be potentially constraining. Global change impacts local climates in multiple dimensions, including seasonality, which is an underpinning and complex factor that determines the thermal biology of reptiles. Studies of reptiles' thermal biology generally look at a single year, which potentially overlooks key biological responses to climate variability that can only be unveiled by long-term analytical timeframes.

## Supporting information

**S1 Fig. Long-term trends in activity,  $T_b$  and environmental temperatures.** Evolution of the deviations from the mean values for activity (grey, solid line), body temperature (dark, solid line), air temperature (blue, dashed line), and substrate temperature (yellow, dashed line), throughout the sampling events ( $N = 42$ ) of *Liolaemus arambarensis*, between January 2013 and December 2016.

(TIFF)

**S2 Fig. Seasonal daily trends in activity,  $T_b$  and environmental temperatures.** Variations in mean activity (grey bars), body temperature (dark, solid line), air temperature (blue, dashed line) and substrate temperature (yellow, dashed line) throughout the day (between 7:00h and 18:00h BTR) for each season, considering each capture of *Liolaemus arambarensis* ( $N = 1229$ ).

(TIFF)

**S3 Fig. Annual variations in seasonal environmental temperatures.** Boxplots show the annual variations in (A) air temperature and (B) substrate temperature for each season, considering each capture of *Liolaemus arambarensis* ( $N = 1229$ ).

(TIFF)

**S4 Fig. Annual variations in seasonal active thermoregulation.** Boxplots show the annual differences between body temperature and air temperature ( $\Delta T_a$ ) and between body temperature and substrate temperature ( $\Delta T_s$ ) for each season, considering each capture of *Liolaemus arambarensis* ( $N = 1229$ ).

(TIFF)

**S1 Table. Mean values in activity,  $T_b$ , environmental temperatures and active thermoregulation.** Annual and seasonal means and standard deviations ( $\bar{x} + sd$ ) of activity, body temperature, air temperature, substrate temperature, and differences between body temperature and air temperature ( $\Delta T_a$ ) or substrate ( $\Delta T_s$ ) temperatures, considering each capture of *Liolaemus arambarensis*. Sample sizes are shown in brackets, first for activity and then for temperature data.

(DOCX)

**S2 Table. Seasonal and annual differences in activity,  $T_b$ , environmental temperatures and active thermoregulation.** P-values of the Tukey HSD post-hoc paired comparisons for activity, body temperature, air temperature, substrate temperature and differences between body temperature and air temperature ( $\Delta T_a$ ) or substrate ( $\Delta T_s$ ) temperatures, between seasons and years. Significant values are given in bold.

(DOCX)

**S3 Table. Annual mean values in seasonal activity,  $T_b$ , environmental temperatures and active thermoregulation.** Annual and seasonal means of activity, body temperature, air temperature, substrate temperature and differences between body temperature and air temperature ( $\Delta T_a$ ) or substrate ( $\Delta T_s$ ) temperatures, considering each capture of *Liolaemus arambarensis*. Sample sizes are shown in brackets, first for activity and then for temperature data. Mild/harsh/extreme seasons are depicted, respectively, with green/light-violet/dark-violet.

(DOCX)

**S4 Table. Differences between normal/mild/harsh seasons.** P-values of the Tukey HSD post-hoc paired comparisons for seasonal activity, body temperature and air temperature between years. Significant values are given in bold. Mild/harsh/extreme seasons are depicted, respectively, with green/light-violet/dark-violet.

(DOCX)

**S5 Table. Historical records of regional temperatures.** Monthly mean values of maximum, average and minimum temperatures in the closest meteorological station to the study site (Porto Alegre-RS; OMM: 83967; 30°05'S, 51°16'W).

(DOCX)

## Acknowledgments

We are extremely grateful to the members of the Herpetology Lab–Universidade Federal do Rio Grande Sul for their valuable help in obtaining the field data. We also thank Emma Bradley for the language review.

## Author Contributions

**Conceptualization:** André Vicente Liz, Murilo Guimarães, Laura Verrastro.

**Formal analysis:** André Vicente Liz, Murilo Guimarães, Laura Verrastro.

**Funding acquisition:** André Vicente Liz, Laura Verrastro.

**Investigation:** André Vicente Liz, Vinicius Santos, Talita Ribeiro, Laura Verrastro.

**Methodology:** André Vicente Liz, Murilo Guimarães, Laura Verrastro.

**Project administration:** Laura Verrastro.

**Resources:** Laura Verrastro.

**Supervision:** Murilo Guimarães, Laura Verrastro.

**Visualization:** Vinicius Santos, Talita Ribeiro, Laura Verrastro.

**Writing – original draft:** André Vicente Liz, Murilo Guimarães, Laura Verrastro.

**Writing – review & editing:** André Vicente Liz, Vinicius Santos, Talita Ribeiro, Murilo Guimarães, Laura Verrastro.

## References

1. Gibbons J, Scott D, Ryan TJ, Buhlmann K, Tuberville T, Metts B, et al. The Global Decline of Reptiles, Déjà Vu Amphibians. *Bioscience*. 2000; 50: 653–666. [https://doi.org/10.1641/0006-3568\(2000\)050\[0653:TGDORD\]2.0.CO;2](https://doi.org/10.1641/0006-3568(2000)050[0653:TGDORD]2.0.CO;2)
2. Whitfield SM, Bell KE, Philippi T, Sasa M, Bolaños F, Chaves G, et al. Amphibian and reptile declines over 35 years at La Selva, Costa Rica. *Proc Natl Acad Sci*. 2007; 104: 8352–8356. <https://doi.org/10.1073/pnas.0611256104> PMID: 17449638
3. Angilletta MJ Jr.. *Thermal Adaptation*. Oxford University Press; 2009.
4. Huey RB. Temperature, Physiology, and the Ecology of Reptiles. In: C G, FH P, editors. *Biology of the Reptilia, Vol 12, Physiology (C)*. Academic Press; 1982. pp. 25–91.
5. Fitzgerald LA, Walkup D, Chyn K, Buchholtz E, Angeli N, Parker M. The Future for Reptiles: Advances and Challenges in the Anthropocene. *Encyclopedia of the Anthropocene*. Elsevier Inc.; 2018.
6. Powers RP, Jetz W. Global habitat loss and extinction risk of terrestrial vertebrates under future land-use-change scenarios. *Nat Clim Chang*. Springer US; 2019; 9: 323–329. <https://doi.org/10.1038/s41558-019-0406-z>
7. Adolph SC, Porter WP. Temperature, Activity, and Lizard Life Histories. *Am Nat*. 1993; 142: 273–295. <https://doi.org/10.1086/285538> PMID: 19425979
8. Bestion E, Teyssier A, Richard M, Clobert J, Cote J. Live Fast, Die Young: Experimental Evidence of Population Extinction Risk due to Climate Change. *PLoS Biol*. 2015; 13: 1–19. <https://doi.org/10.1371/journal.pbio.1002281> PMID: 26501958
9. Huey RB, Kearney MR, Krockenberger A, Holtum JAM, Jess M, Williams SE. Predicting organismal vulnerability to climate warming: roles of behaviour, physiology and adaptation. *Philos Trans R Soc B Biol Sci*. 2012; 367: 1665–1679. <https://doi.org/10.1098/rstb.2012.0005> PMID: 22566674
10. Piantoni C, Navas CA, Ibarquengoytia NR. A real tale of Godzilla: impact of climate warming on the growth of a lizard. *Biol J Linn Soc*. 2019; 126: 768–782. <https://doi.org/10.1093/biolinnea/bly216>
11. Rutschmann A, Miles DB, Le Galliard JF, Richard M, Moulherat S, Sinervo B, et al. Climate and habitat interact to shape the thermal reaction norms of breeding phenology across lizard populations. *J Anim Ecol*. 2016; 85: 457–466. <https://doi.org/10.1111/1365-2656.12473> PMID: 26589962
12. Böhm M, Collen B, Baillie JEM, Bowles P, Chanson J, Cox N, et al. The conservation status of the world's reptiles. *Biol Conserv*. 2013; 157: 372–385. <https://doi.org/10.1016/j.biocon.2012.07.015>
13. Thomas CD, Cameron A, Green RE, Bakkenes M, Beaumont LJ, Collingham YC, et al. Extinction risk from climate change. *Nature*. 2004; 427: 145–148. <https://doi.org/10.1038/nature02121> PMID: 14712274
14. Sinervo B, Mendez-de-la-Cruz F, Miles DB, Heulin B, Bastiaans E, Villagran-Santa Cruz M, et al. Erosion of Lizard Diversity by Climate Change and Altered Thermal Niches. *Science* (80). 2010; 328: 894–899. <https://doi.org/10.1126/science.1184695> PMID: 20466932
15. Diele-Viegas LM, Rocha CFD. Unraveling the influences of climate change in Lepidosauria (Reptilia). *Journal of Thermal Biology*. Elsevier Ltd; 2018. pp. 401–414.
16. Maxwell SL, Butt N, Maron M, McAlpine CA, Chapman S, Ullmann A, et al. Conservation implications of ecological responses to extreme weather and climate events. *Divers Distrib*. 2018; 25: 613–625. <https://doi.org/10.1111/ddi.12878>
17. Meiri S, Bauer AM, Chirio L, Colli GR, Das I, Doan TM, et al. Are lizards feeling the heat? A tale of ecology and evolution under two temperatures. *Glob Ecol Biogeogr*. 2013; 22: 834–845. <https://doi.org/10.1111/geb.12053>
18. Kirchof S, Hetem RS, Lease HM, Miles DB, Mitchell D, Müller J, et al. Thermoregulatory behavior and high thermal preference buffer impact of climate change in a Namib Desert lizard. *Ecosphere*. 2017; 8: e02033. <https://doi.org/10.1002/ecs2.2033>
19. Ortega Z, Mencia A, Pérez-Mellado V. Behavioral buffering of global warming in a cold-adapted lizard. *Ecol Evol*. 2016; 6: 4582–4590. <https://doi.org/10.1002/ece3.2216> PMID: 27386098



20. Garcia RA, Cabeza M, Rahbek C, Araujo MB. Multiple Dimensions of Climate Change and Their Implications for Biodiversity. *Science*. 2014; 344: 1247579–1247579. <https://doi.org/10.1126/science.1247579> PMID: 24786084
21. Ummenhofer CC, Meehl GA. Extreme weather and climate events with ecological relevance: a review. *Philos Trans R Soc B Biol Sci*. 2017; 372: 20160135. <https://doi.org/10.1098/rstb.2016.0135> PMID: 28483866
22. Cohen J, Pfeiffer K, Francis JA. Warm Arctic episodes linked with increased frequency of extreme winter weather in the United States. *Nat Commun*. Springer US; 2018; 9: 1–12. <https://doi.org/10.1038/s41467-018-02992-9> PMID: 29535297
23. Santer BD, Po-Chedley S, Zelinka MD, Cvijanovic I, Bonfils C, Durack PJ, et al. Human influence on the seasonal cycle of tropospheric temperature. *Science*. 2018; 361: eaas8806. <https://doi.org/10.1126/science.aas8806> PMID: 30026201
24. Wallace JM, Held IM, Thompson DWJ, Trenberth KE, Walsh JE. Global Warming and Winter Weather. *Science*. 2014; 343: 729–730. <https://doi.org/10.1126/science.343.6172.729> PMID: 24531953
25. IPCC. Climate Change 2013: The Physical Science Basis. Contribution of Working Group I to the Fifth Assessment Report of the Intergovernmental Panel on Climate Change. Stocker, T.F., D. Qin, G.-K. Plattner, M. Tignor, S.K. Allen, J. Boschung, A. Nauels, Y. Xia VB and PMM, editor. Cambridge, United Kingdom and New York: Cambridge University Press; 2013.
26. Díaz JA, Iraeta P, Monasterio C. Seasonality provokes a shift of thermal preferences in a temperate lizard, but altitude does not. *J Therm Biol*. 2006; 31: 237–242. <https://doi.org/10.1016/j.jtherbio.2005.10.001>
27. Huey RB, Pianka ER. Seasonal Variation in Thermoregulatory Behavior and Body Temperature of Diurnal Kalahari Lizards. *Ecology*. 1977; 58: 1066–1075. <https://doi.org/10.2307/1936926>
28. Ortega Z, Pérez-Mellado V. Seasonal patterns of body temperature and microhabitat selection in a lacertid lizard. *Acta Oecologica*. 2016; 77: 201–206. <https://doi.org/10.1016/j.actao.2016.08.006>
29. Kubisch EL, Corbalán V, Ibargüengoytia NR, Sinervo B. Local extinction risk of three species of lizard from Patagonia as a result of global warming. *Can J Zool*. 2015; 94: 49–59. <https://doi.org/10.1139/cjz-2015-0024>
30. Vicenzi N, Corbalán V, Miles D, Sinervo B, Ibargüengoytia N. Range increment or range detriment? Predicting potential changes in distribution caused by climate change for the endemic high-Andean lizard *Phymaturus palluma*. *Biol Conserv*. Elsevier Ltd; 2017; 206: 151–160. <https://doi.org/10.1016/j.biocon.2016.12.030>
31. Walther G-R, Post E, Convey P, Menzel A, Parmesan C, Beebee TJC, et al. Ecological responses to recent climate change. *Nature*. 2002; 416: 389–395. <https://doi.org/10.1038/416389a> PMID: 11919621
32. Huey RB, Losos JB, Moritz C. Are Lizards Toast? *Science*. 2010; 328: 832–833. <https://doi.org/10.1126/science.1190374> PMID: 20466909
33. Zani PA, Rollyson ME. The Effects of Climate Modes on Growing-Season Length and Timing of Reproduction in the Pacific Northwest as Revealed by Biophysical Modeling of Lizards. *Am Midl Nat*. 2011; 165: 372–388. <https://doi.org/10.1674/0003-0031-165.2.372>
34. Berriozabal-Islas C, Rodrigues JFM, Ramírez-Bautista A, Becerra-López JL, Nieto-Montes de Oca A. Effect of climate change in lizards of the genus *Xenosaurus* (Xenosauridae) based on projected changes in climatic suitability and climatic niche conservatism. *Ecol Evol*. 2018; 8: 6860–6871. <https://doi.org/10.1002/ece3.4200> PMID: 30073050
35. Huey RB, Deutsch CA, Tewksbury JJ, Vitt LJ, Hertz PE, Pérez HJÁ, et al. Why tropical forest lizards are vulnerable to climate warming. *Proc R Soc B Biol Sci*. 2009; 276: 1939–1948. <https://doi.org/10.1098/rspb.2008.1957> PMID: 19324762
36. Roll U, Feldman A, Novosolov M, Allison A, Bauer AM, Bernard R, et al. The global distribution of tetrapods reveals a need for targeted reptile conservation. *Nat Ecol Evol*. 2017; 1: 1677–1682. <https://doi.org/10.1038/s41559-017-0332-2> PMID: 28993667
37. Sears MW, Angilletta MJ, Schuler MS, Borchert J, Dilliplane KF, Stegman M, et al. Configuration of the thermal landscape determines thermoregulatory performance of ectotherms. *Proc Natl Acad Sci*. 2016; 113: 10595–10600. <https://doi.org/10.1073/pnas.1604824113> PMID: 27601639
38. Huey RB. Behavioral thermoregulation in lizards: importance of associated costs. *Science*. 1974; 184: 1001–1003. <https://doi.org/10.1126/science.184.4140.1001> PMID: 4826166
39. Huey RB, Slatkin M. Cost and Benefits of Lizard Thermoregulation. *Q Rev Biol*. 1976; 51: 363–384. <https://doi.org/10.1086/409470> PMID: 981504
40. Tan WC, Schwanz LE. Thermoregulation across thermal environments in a nocturnal gecko. *J Zool*. 2015; 296: 208–216. <https://doi.org/10.1111/jzo.12235>

41. Bonino MF, Moreno Azócar DL, Schulte JA, Abdala CS, Cruz FB. Thermal sensitivity of cold climate lizards and the importance of distributional ranges. *Zoology*. Elsevier GmbH.; 2015; 118: 281–290.
42. Uetz, P., Freed, P., Hošek J. The Reptile Database [Internet]. 2018 [cited 30 May 2019]. [http://reptile-database.reptarium.cz/advanced\\_search?genus=Liolaemus&submit=Search](http://reptile-database.reptarium.cz/advanced_search?genus=Liolaemus&submit=Search)
43. Labra A, Pienaar J, Hansen TF. Evolution of Thermal Physiology in Liolaemus Lizards: Adaptation, Phylogenetic Inertia, and Niche Tracking. *Am Nat*. 2009; 174: 204–220. <https://doi.org/10.1086/600088> PMID: 19538089
44. Medina M, Scolaro A, Méndez-De la Cruz F, Sinervo B, Miles DB, Ibargüengoytía N. Thermal biology of genus Liolaemus: A phylogenetic approach reveals advantages of the genus to survive climate change. *J Therm Biol*. 2012; 37: 579–586. <https://doi.org/10.1016/j.jtherbio.2012.06.006>
45. Rodríguez-Serrano E, Navas CA, Bozinovic F. The comparative field body temperature among Liolaemus lizards: Testing the static and the labile hypotheses. *J Therm Biol*. 2009; 34: 306–309. <https://doi.org/10.1016/j.jtherbio.2009.04.002>
46. Catullo RA, Llewelyn J, Phillips BL, Moritz CC. The Potential for Rapid Evolution under Anthropogenic Climate Change. *Curr Biol*. Elsevier BV; 2019; 29: R996–R1007. <https://doi.org/10.1016/j.cub.2019.08.028> PMID: 31593684
47. Verrastro L, Veronese L, Bujes C, Dias Filho MM. A new species of Liolaemus arambarensis from southern Brasil (Iguania: Tropicuridae). *Herpetologica*. 2003; 59: 105–118. [https://doi.org/10.1655/0018-0831\(2003\)059\[0105:ANSOLF\]2.0.CO;2](https://doi.org/10.1655/0018-0831(2003)059[0105:ANSOLF]2.0.CO;2)
48. Espinoza R. Liolaemus arambarensis. IUCN Red List Threat Species 2010. 2010; 8235.
49. Martins LF, Guimarães M, Verrastro L. Population Estimates for the Sand Lizard, Liolaemus arambarensis : Contributions to the Conservation of an Endemic Species of Southern Brazil. *Herpetologica*. 2017; 73: 55–62. <https://doi.org/10.1655/herpetologica-d-16-00046.1>
50. Craugastor SF, Rican C, Forest TD, Bolan F, Puschendorf R, Zhu W, et al. The novel and endemic pathogen hypotheses: Competing explanations for the origin of emerging infectious diseases of wildlife. *Conserv Biol*. 2006; 8: 141–148. <https://doi.org/10.1111/j.1523-1739.2005.00255.x>
51. Suguio K, Tessler MG. Planícies de cordões litorâneos quaternários do Brasil: origem e nomenclatura. In: Lacerda L, editor. Restingas, origem, estrutura, processos. 1984. pp. 32–56.
52. Kuinchtner A, Buriol GaA. Clima do Estado do Rio Grande do Sul segundo a classificação climática de Köppen e Thornthwaite. *Discip Sci Série Ciências Exatas*. 2001; 2: 171–182. Available: <http://sites.unifra.br/Portals/36/tecnologicas/2001/clima.pdf>
53. Crump M, Scott N Jr.. Measuring and monitoring biological diversity: Standard methods for amphibians. In: Heyer W.R., Donnelly M.A., McDiarmid R.W., Hayek L.C. and FMS, editor. Visual encounter surveys. Smithsonian Institution Press; 1994. p. 364.
54. Di-Bernardo M., Borges-Martins M., Oliveira R.D., Pontes GMF. Taxocenoses de serpentes de regiões temperadas do Brasil. In: Nascimento L.B., Oliveira E, editor. *Herpetologia no Brasil II*. 2007. p. 354.
55. Borges-Landáez PA, Shine R. Influence of Toe-Clipping on Running Speed in Eulamprus quoyii, an Australian Scincid Lizard. *J Herpetol*. 2003; 37: 592–595. <https://doi.org/10.1670/26-02N>
56. Langkilde T, Shine R. How much stress do researchers inflict on their study animals? A case study using a scincid lizard, Eulamprus heatwolei. *J Exp Biol*. 2006; 209: 1035–1043. <https://doi.org/10.1242/jeb.02112> PMID: 16513929
57. Paulissen MA, Meyer HA. The Effect of Toe-Clipping on the Gecko Hemidactylus turcicus. *J Herpetol*. 2000; 34: 282–285. <https://doi.org/10.2307/1565425>
58. Matthiopoulos J. How to be a Quantitative Ecologist [Internet]. Chichester, UK: John Wiley & Sons, Ltd; 2011.
59. Akaike H. Maximum likelihood identification of Gaussian autoregressive moving average models. *Biometrika*. 1973; 60: 255–265. <https://doi.org/10.1093/biomet/60.2.255>
60. Kiefer MC, Van Sluys M, Rocha CFD. Thermoregulatory behaviour in Tropidurus torquatus (Squamata, Tropiduridae) from Brazilian coastal populations: an estimate of passive and active thermoregulation in lizards. *Acta Zool*. 2006; 88: 81–87. <https://doi.org/10.1111/j.1463-6395.2007.00254.x>
61. Maia-Carneiro T, Rocha CFD. Seasonal variations in behaviour of thermoregulation in juveniles and adults Liolaemus lutzae (Squamata, Liolaemidae) in a remnant of Brazilian restinga. *Behav Processes*. 2013; 100: 48–53. <https://doi.org/10.1016/j.beproc.2013.08.001> PMID: 23941976
62. Vrcibradic D, Rocha CFD. The Ecology of the Skink Mabuya frenata in an Area of Rock Outcrops in Southeastern Brazil. *J Herpetol*. 1998; 32: 229–237. <https://doi.org/10.2307/1565302>
63. Pianka ER, Vitt LJ. Lizards: windows to the evolution of diversity. University of California Press; 2003.
64. Porter WP, Gates DM. Thermodynamic Equilibria of Animals with Environment. *Ecol Monogr*. Wiley; 1969; 39: 227–244. <https://doi.org/10.2307/1948545>

65. Maia-Carneiro T, Rocha CFD. Influences of sex, ontogeny and body size on the thermal ecology of *Liolaemus lutzae* (Squamata, Liolaemidae) in a restinga remnant in southeastern Brazil. *J Therm Biol.* 2013; 38: 41–46. <https://doi.org/10.1016/j.jtherbio.2012.10.004> PMID: 24229803
66. Ruby DE. Winter Activity in Yarrow's Spiny Lizard, *Sceloporus jarrovi*. *Herpetologica*. Allen Press/Herpetologists' League; 1977; 33: 322–333.
67. Verrastro L, Ely I. Diet of the lizard *Liolaemus occipitalis* in the coastal sand dunes of southern Brazil (Squamata-Liolaemidae). *Brazilian J Biol. Instituto Internacional de Ecologia*; 2015; 75: 289–299. <https://doi.org/10.1590/1519-6984.11013> PMID: 26132010
68. Rocha CFD. Ecologia Termal de *Liolaemus Lutzae* (Sauria: Tropicuridae) em uma área de Restinga do Sudeste do Brasil. *Rev Bras Biol.* 1995; 55: 481–489.
69. Bujes CS, Verrastro L. Thermal biology of *Liolaemus occipitalis* (Squamata, Tropicuridae) in the coastal sand dunes of Rio Grande do Sul, Brazil. *Brazilian J Biol.* 2006; 66: 945–954. <https://doi.org/10.1590/s1519-69842006000500021> PMID: 17119843
70. Maia-Carneiro T, Dorigo TA, Rocha CFD. Influences of Seasonality, Thermal Environment and Wind Intensity on the Thermal Ecology of Brazilian Sand Lizards In A Restinga Remnant. *South Am J Herpetol.* 2012; 7: 241–251. <https://doi.org/10.2994/057.007.0306>
71. Marquet PA, Ortíz JC, Bozinovié F, Jaksíé FM. Ecological aspects of thermoregulation at high altitudes: the case of andean *Liolaemus* lizards in northern Chile. *Oecologia*. Springer-Verlag; 1989; 81: 16–20. <https://doi.org/10.1007/BF00377003> PMID: 28312150
72. Etheridge R. A Review of Lizards of the *Liolaemus wiegmanni* Group (Squamata, Iguania, Tropicuridae), and a History of Morphological Change in the Sand-Dwelling Species. *Herpetol Monogr.* 2000; 14: 293–352. <https://doi.org/10.2307/1467049>
73. Kiefer MC, Van Sluys M, Rocha CFD. Body temperatures of *Tropicurus torquatus* (Squamata, Tropicuridae) from coastal populations: Do body temperatures vary along their geographic range? *J Therm Biol.* 2005; 30: 449–456. <https://doi.org/10.1016/j.jtherbio.2005.05.004>
74. Martori R, Aun L, Orlandini S. Relaciones térmicas temporales en una población de *Liolaemus koslowskyi*. *Cuad Herpetol.* 1998; 16: 33–45. Available: [http://www.cuadherpetol.com.ar/pdf/16-1/161\\_3.pdf](http://www.cuadherpetol.com.ar/pdf/16-1/161_3.pdf)
75. Wang L, Chen W. The East Asian winter monsoon: Re-amplification in the mid-2000s. *Chinese Sci Bull.* 2014; 59: 430–436. <https://doi.org/10.1007/s11434-013-0029-0>