

REVIEW

Carcinoid Heart Disease – A Review of Pathophysiology, Clinical Manifestations, Diagnosis and Management

Sai Nikhila Ghanta, MD¹ and Srikanth Vallurupalli, MD²

¹Department of Internal Medicine, University of Arkansas for Medical Sciences, Little Rock, Arkansas, USA

²Division of Cardiology, University of Arkansas for Medical Sciences, Little Rock, Arkansas, USA

Received: 30 December 2022; Revised: 15 April 2023; Accepted: 24 May 2023

Abstract

Objective: Neuro-endocrine tumors (NET) resulting in syndromes of serotonin excess can lead to cardiac involvement, and substantial mortality and morbidity. This article is aimed at reviewing the pathophysiology, diagnosis and management of carcinoid heart disease (CHD).

Results: The pathophysiology of CHD stems from chronic exposure to circulating vasoactive compounds. Frequent clinical evaluations, monitoring of biomarker levels and cardiac imaging play critical roles in screening and early recognition. The complexity of the disease necessitates a multidisciplinary approach, medical management and timely surgical intervention.

Conclusion: Outcomes of CHD have improved, owing to advances in medical management and increased surgical expertise. Surgical valvular intervention is the only definitive therapy for the treatment of symptomatic CHD.

Keywords: Neuro-endocrine tumors; carcinoid syndrome; vasoactive mediators; carcinoid heart disease; valvular heart disease; medical management; cardiac surgery

Significance Statement

Carcinoid heart disease (CHD), a rare form of valvular heart disease, is associated with poor prognosis in patients with carcinoid syndrome. The initial presentation of CHD is often subtle and insidious. Cardiac biomarkers and imaging aid in screening and early diagnosis. A multidisciplinary team of cardiologists, oncologists, cardiac surgeons and gastroenterologists is necessary for comprehensive management of CHD.

Introduction and Epidemiology

Neuro-endocrine tumors (NET), which were once considered relatively rare, are a heterogeneous group of slow-growing neoplasms originating mainly from enterochromaffin cells. The incidence

and prevalence of NETs have continued to increase, owing to increased diagnosis of early stage tumors and possibly stage migration [1]. In the United States, the age-adjusted annual incidence of NETs rose 6.4-fold over the past 20 years, to 6.98 per 100,000 people [1, 2]. Carcinoid tumors are well differentiated NETs that typically originate from the gastro-intestinal tract or bronchopulmonary system, and can cause carcinoid syndrome through the secretion of various vasoactive substances.

Correspondence: Sai Nikhila Ghanta, MD, 4301 West Markham St, slot 532, Little Rock, AR 72205, USA, E-mail: sainikhila.g@gmail.com

Carcinoid heart disease (CHD) eventually occurs in as many as 50% of patients with carcinoid syndrome and can be the primary disease manifestation in as many as 20% of these patients [3, 4]. Valvular involvement in CHD often results in heart failure, and is a major cause of morbidity and mortality [5]. The estimated 3-year survival is 31%, which is approximately half that in people with carcinoid syndrome without CHD [5, 6]. Sufficient evidence indicates that early diagnosis and treatment of CHD improve symptoms and longevity [7]. To achieve early diagnosis and treatment, a multidisciplinary team approach, involving oncologists, cardiologists, endocrinologists, anesthesiologists and cardio-thoracic surgeons, is required [8].

In this article, we review the current literature on pathophysiology, clinical presentation, epidemiologic characteristics, diagnostic tools and novel treatment strategies in CHD management.

Pathophysiology

NETs are typically indolent and secrete a myriad of vaso-active compounds, such as serotonin, 5-hydroxy tryptophan (5-HTE), histamine, bradykinins, growth factors and prostaglandins. These compounds are often deactivated in the liver and lungs, thus protecting the heart. Cardiac involvement, typically in the right side of the heart, occurs when: a) tumors metastasize to the liver, thus bypassing its deactivating mechanisms, or b) the overwhelming burden of secreted vasoactive compounds exceeds the degradation capability of the liver and lungs. In addition, left sided involvement occurs with bronchopulmonary carcinoid or in the presence of a right to left intracardiac shunt, such as a patent foramen ovale or atrial septal defect [3, 9, 10]. In these scenarios, the heart is exposed to paraneoplastic effects of circulating serotonin, growth factors, and other vasoactive peptides, as well as cross-talk among them [11]. Consequently, pro-inflammatory cytokines, such as transforming growth factor beta, are generated through the stimulation of serotonin receptors in the heart (primarily 5HT2B) [10–12]. Consequently, plaque-like fibrous tissue and extracellular matrix deposition occur in the endocardium of valvular cusps, leaflets, tendinous cords, papillary muscles, cardiac chambers, and occasionally the intima of the pulmonary

arteries or the aorta [10]. Eventually, these deposits cause structural deformation and progressive dysfunction of the pulmonary and tricuspid valves, right ventricular dysfunction and heart failure over the course of months [4].

Experimental *in vivo* and *in vitro* studies that have advanced understanding of pathogenesis are shown in Supplementary Table S1 [13–17].

Among these vasoactive substances, the strongest evidence supports the critical roles of serotonin and its metabolite 5-hydroxyindoleacetic acid (5-HIAA) in the pathogenesis, diagnosis and prognosis of CHD [3, 18–21]. In a large cross-sectional study (n=187), patients with CHD (n=37) have been found to have significantly higher levels of serum chromogranin A/B, neurokinin-A and 5-HIAA than those without CHD (187-37: 150 patients with NET and/or carcinoid syndrome but no cardiac involvement). NT-pro-BNP (AUC: 0.82; CI: 0.74–0.90, P<0.0001) and 5HIAA (AUC: 0.85; CI: 0.78–0.92, P<0.0001) have been identified as the best predictive markers for CHD development [18]. In contrast, no significant correlation has been detected between transforming growth factor beta and fibroblast growth factor levels and CHD [19]. Furthermore, insights from the pathophysiology of drug-induced valvular heart disease have reinforced the role of serotonin in CHD pathogenesis. Ergot derivatives, such as ergotamine; methysergide; and dopamine antagonists, such as pergolide and cabergoline, are structurally similar to serotonin and are believed to cause valve disease by stimulating serotonin 5-HT 2B receptors [22–24].

Clinical Presentation and Diagnosis

The initial presentation of CHD is often subtle and insidious. On an average, CHD develops approximately 2 years after the initial diagnosis of carcinoid syndrome [6]. The symptoms and signs are usually right sided heart failure, such as worsening dyspnea, peripheral edema, ascites with physical examination revealing jugular venous distention, palpable RV impulse, pulsatile hepatomegaly, and audible tricuspid and pulmonic regurgitation murmurs. Rarer presentations include coronary artery spasm in patients with non-occlusive coronary artery disease, direct tumor metastasis to cardiac muscle, left sided heart failure, and supraventricular and ventricular arrhythmias [3, 25–27].

Laboratory Diagnosis

A 24-hour urine measurement of 5-HIAA >300 mmol is an important biomarker in CHD prediction and prognostication. In a meta-analysis by Joish et al. [28], every 10-unit increase in urinary 5-HIAA levels has been found to correspond to an 11.8% (95% CI 8.9%–17.0%) increase in 12-month mortality. Plasma 5-HIAA levels may serve as a surrogate for urine measurement, but serotonin rich foods and commonly used medications can result in false positive (e.g., acetaminophen, nicotine and caffeine) and false negative (e.g., aspirin) results. NT-pro-BNP levels are useful for screening (levels greater than 260 pg/mL can diagnose CHD with a sensitivity of 92% and a specificity of 91%), and correlate well with CHD disease severity, as compared with 5-HIAA [29]. Hence, in addition to clinical evaluation, serum NT-Pro BNP measurement is recommended every 6–12 months in all patients with metastatic NETs every 6–12 months [8]. Chromogranin A and activin A lack specificity in the detection of CHD [30, 31].

Imaging

Two-dimensional transthoracic echocardiography (TTE) remains the primary imaging modality enabling both morphological and functional assessment. The recently published American College of Cardiology consensus statement recommends echocardiography screening in all patients with suspected CHD [8]. The current literature also advocates for repeat TTE every 6 months in patients with mild disease and every 3 months in patients with

moderate-severe disease [8, 32]. Pathognomonic plaque-like fibrous deposits involving the valvular and sub-valvular apparatus decrease the dynamic motion of the leaflet, thereby leading to a characteristic “board-like” pattern during diastole. In severe cases, the tricuspid valve is fixed and retraced, and does not coapt, thus resulting in a distinctive “dagger-shaped” Doppler profile [32] (Figure 1). Advanced echocardiographic techniques, such as three-dimensional echocardiography and transesophageal echocardiography, may be useful in assessing pulmonic and tricuspid valves in some cases [33]. Cardiac magnetic resonance imaging (MRI) and cardiac computed tomography (CT) are other valuable adjuncts that can be used when echocardiographic image findings are equivocal [34]. Surgical planning and technique can be optimized by using cardiac MRI and cardiac CT, because they can also quantify right ventricular volumes and function, and identify myocardial metastasis and their relation to coronary arteries [32, 34].

Several echocardiographic scoring systems have been developed to diagnose CHD and determine its progression (Table 1). The current literature recommends the use of scoring systems focusing on valve anatomy and regurgitation for screening, and reserving more complex scoring systems for monitoring the progression of CHD [37].

Management

A comprehensive approach involves addressing the tumor burden, progression of valve disease, heart failure symptoms and timely surgical intervention in selected individuals (Figure 2) [8].

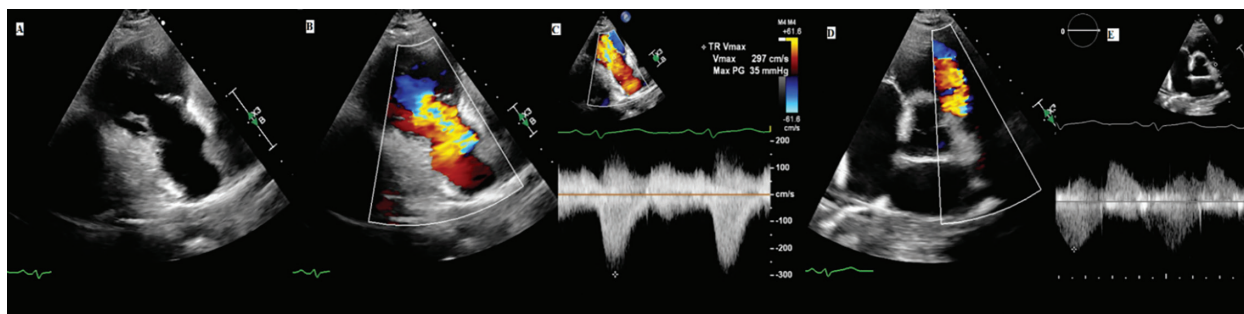


Figure 1 Echo Diagnosis of Right Sided Carcinoid Heart Disease.

A) RV inflow view of the tricuspid valve shows thickened leaflets that are open during mid systole due to significant fibrosis and adhesions. B) Color Doppler shows severe wide open tricuspid regurgitation. C) Continuous wave Doppler shows classic “V cut off sign”. D) Severe pulmonic regurgitation by Color Doppler in parasternal short axis view at aortic valve level. E) Continuous wave Doppler depicts the short pressure half time of pulmonary regurgitation jet.

Table 1 Echocardiographic scoring systems validated in carcinoid heart disease.

Name	Number of patients and type of study	Parameters	Outcomes	Limitations
Denney et al. [35]. 1998	23; prospective single center cohort study	Carcinoid valvular heart disease percentage (CVHD%) score: 1. Tricuspid valve: thickness, mobility, severity of stenosis/regurgitation 2. Pulmonic valve: stenosis and insufficiency severity	1. Echocardiographic regression of CHD was not observed in any patient, despite treatment with somatostatin analogue 2. Post treatment 5-HIAA levels independently correlated with CHD progression (P<0.005)	1. Smaller sample size and relatively rare disease condition 2. Does not establish causality; can also be used to speculate regarding the relation between serotonin and CHD
Moller et al. [21]. 2003	71; retrospective single center cohort study	Cardiac score: tricuspid/pulmonic: valve anatomy, regurgitation severity, right ventricular (RV) size/systolic function, presence/absence of diastolic forward flow in the pulmonary artery and systolic flow reversal in hepatic veins	1. Peak urinary 5-HIAA levels (OR:1.08, CI:1.03–1.13; P:0.009) and previous chemotherapy (OR:3.65; CI:1.74–7.48; P:0.0001) emerged as predictors of CHD progression	1. Lack of well accepted criteria for CHD progression; arbitrarily presumes a 25% increase in cardiac score as a criterion for progression of CHD 2. Inclusion of RV size/function increases the risk of misinterpretation of RV remodeling from chronic stable valvular heart disease as CHD
Bhattacharyya et al. [29]. 2008	200; prospective single center cohort study	Carcinoid score: tricuspid/pulmonary valve: thickening, mobility, morphology, stenosis/regurgitation severity, RV diameter and function	1. NT-pro-BNP levels >260 pg/mL had a sensitivity and specificity of 92% and 91%, respectively, in diagnosing CHD 2. NT-pro-BNP levels positively correlated with carcinoid score (r =0.81, P<0.001) and New York Heart Association (NYHA) class (P<0.001) 3. A screening strategy combining the carcinoid score and NT-pro-BNP levels >260 pg/mL decreased the number needed to treat from 5.1 to 1.4	1. Long term follow-up studies with echocardiography are needed to assess the usefulness of NT-pro-BNP as a marker for disease progression 2. Study outcomes are limited by inter-observer variability, because some components of the score relied on semi-quantitative assessments
Westberg et al. [5], 2001	62; cross-sectional single center study	Tricuspid/pulmonary: Doppler estimation of valvular regurgitation and flow profiles	1. Presence of severe structural and functional abnormalities emerged as the main predictor of prognosis in patients with malignant midgut carcinoid syndrome	1. Small sample size

Table 1 (continued)

Name	Number of patients and type of study	Parameters	Outcomes	Limitations
Mansencal et al. [36], 2010	80; prospective single center cohort study	<ol style="list-style-type: none"> 1. Right, left and overall score of CHD severity 2. Right CHD score: tricuspid/pulmonary valve: anatomy, stenosis/regurgitation, and RV size 3. Left CHD score: mitral/aortic valve: anatomy and severity of regurgitation 	<ol style="list-style-type: none"> 1. Urinary 5-HIAA levels strongly correlated with the right CHD score ($r=0.75$, $P<0.0001$), left CHD score ($r=0.83$, $P<0.001$) and overall CHD score ($r=0.84$, $P<0.0001$) 2. All patients with >3 years of carcinoid syndrome and increased urinary 5-HIAA levels presented with echocardiographic evidence of valve disease with routine monitoring 	<ol style="list-style-type: none"> 1. Observer bias cannot be excluded in calculating the CHD score

Pharmacotherapy for CHD Related Heart Failure

Owing to the rarity of this condition, standard heart failure medications, such as beta blockers, angiotensin-converting enzyme inhibitors (ACE-I) and angiotensin-2 receptor antagonists, digoxin and vasodilators, have not been studied in the management of CHD related heart failure. Similarly to other heart failure states, diuretics/aldosterone antagonists can be used to optimize fluid status. Caution is required to avoid intravascular volume depletion in isolated right heart failure, which can further decrease cardiac output.

Management of Carcinoid Syndrome in CHD

The mainstay of management of CHD is decreasing tumor metabolites. Somatostatin analogues (SSAs) designed to decrease circulating tumor metabolites are the standard of care for carcinoid syndrome. Long-acting SSAs, such as octreotide LAR or lanreotide/paserotide, are increasingly being used in asymptomatic patients, owing to their demonstrated efficacy in retarding tumor growth and preventing the progression of CHD [38, 39]. Therapy is guided by 5-HIAA levels, and a level <300 mmol/24 hrs is the treatment goal in CHD. These medications achieve symptomatic improvement as well as biochemical response in 60%–70% of patients but have not been shown to reverse existing valvular heart disease [8]. Patients with refractory symptoms can be treated with higher doses/increased frequency of SSAs or with short acting SSAs in addition to depot formulations. If symptoms persist, other options include the following:

- A) Interferon alpha ($INF-\alpha$): When used along with SSAs, $INF-\alpha$ may control symptoms and achieve a biochemical response. However its use is limited by substantial adverse effects [40].
- B) Peptide receptor radionuclide therapy (PRRT): This radioisotope therapy, used in combination with octreotide, has been shown to elicit a symptomatic response and antiproliferative activity, mainly in advanced NET and somatostatin-receptor positive lesions [41]. However, concomitant use of peptide and fluid infusions

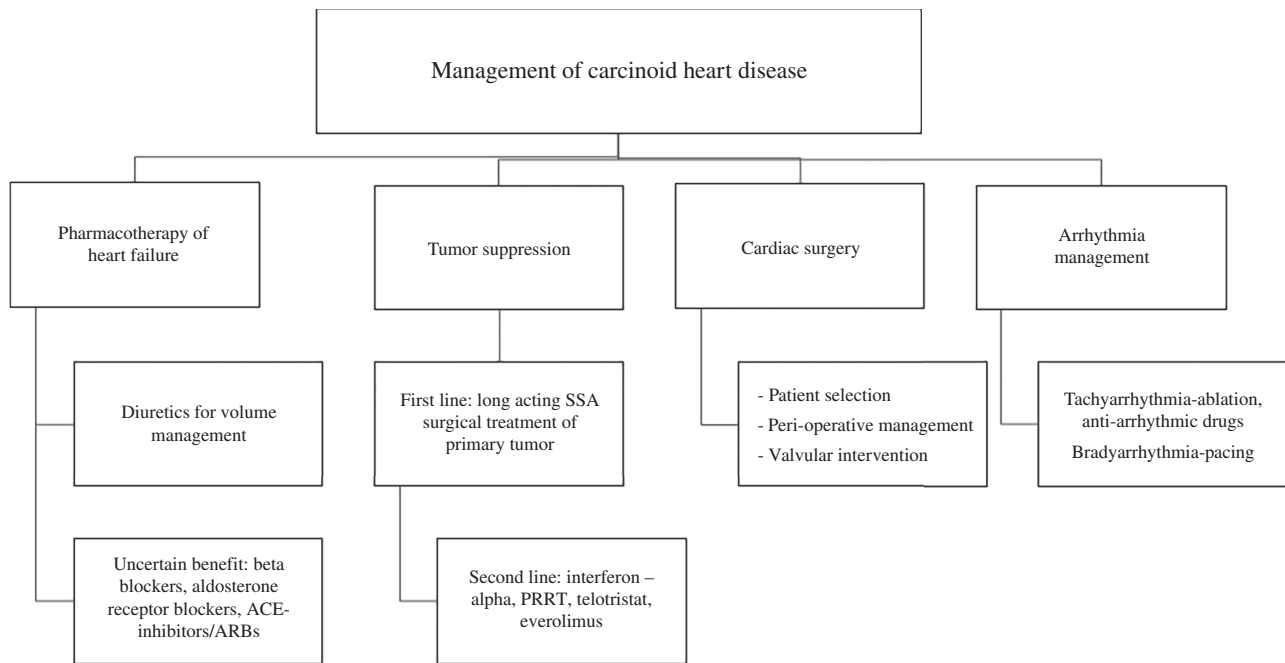


Figure 2 Comprehensive Management Approach of Carcinoid Heart Disease.

with PPRT can complicate care in patients with decompensated heart failure, thereby resulting in fluid overload.

- C) Telotristat: This oral tryptophan hydroxylase inhibitor with SSAs ameliorates diarrhea associated with carcinoid syndrome and urinary 5-HIAA levels [42].
- D) Everolimus: This oral inhibitor of mammalian target of rapamycin (mTOR) and octreotide has been found to prolong progression free survival in patients with advanced NETs associated with carcinoid syndrome, in the RADIANT-2 trial [43].
- E) Capecitabine/temozolomide (CAPTEM): This combination chemotherapy has shown efficacy in pancreatic neuroendocrine tumors. Papaxoinis et al., in a retrospective analysis, have studied the efficacy of CAPTEM chemotherapy in the management of advanced pulmonary carcinoid syndrome. Although the response rate was relatively low (18%), the progression free survival was longer (9 months) than that with temozolomide monotherapy [44].

Non-cardiac Interventions to Decrease Tumor Burden

Hepatic interventions can aid in decreasing vasoactive substances and tumor burden. Transcatheter

arterial embolization and hepatic cytoreductive surgery are two effective treatment options. Transcatheter arterial embolization of hepatic lesions is a less invasive approach that can elicit a clinical response in a substantial number of patients [45]. Hepatic cytoreductive surgery is a more invasive option. However, the peri-operative mortality and morbidity associated with hepatic intervention can be significantly elevated in patients with right heart dysfunction and congestive heart failure. Hence, in such cases, cardiac valve repair and optimization of right heart function may be necessary before hepatic surgery.

Cardiovascular Surgery

Valvular intervention is the only definitive therapy for the treatment of symptomatic CHD. When performed in a timely manner in experienced centers, this therapy improves symptoms and prognosis [7]. Valve surgery, generally replacement, should be considered in patients with severe symptomatic valvular stenosis/regurgitation; asymptomatic patients with ventricular dysfunction and well controlled systemic disease; or patients before hepatic cytoreductive surgery. Cardiac surgery requires careful patient selection and planning, because most patients require

multivalvular surgery, often in the setting of right ventricular dysfunction. Tricuspid and/or pulmonary valve replacement surgery can be performed together with closure of a patent foramen ovale and removal of intracardiac carcinoid metastasis. Studies reporting outcomes with surgical treatment of CHD are described in Table 2. In the largest operative experience published to date (n=240), 73% of patients required multivalvular surgery (two or more valves), and 16% of patients required left sided valve operation; the cumulative 30-day mortality has been 9% over the past 3 decades [50]. However, early operative mortality has decreased over time with increasing surgical experience, from 29% between 1985 and 1994; to 7% over the next 10 years; and finally to 5% from 2005 onward. Older age (HR: 1.55, P<0.001), higher New York Heart Association functional class (HR: 1.53, P<0.004) and non-linear variability of creatinine (HR: 0.81, P=0.83) have emerged as independent predictors of overall mortality. Interestingly, the number of valves replaced has not been found to be associated with mortality [50]. The choice of valve prosthesis is a matter of debate; however, bio-prosthetic valves are favored over mechanical valves for several reasons [8, 51]. Bioprosthetic valves are associated with a lower risk of valve thrombosis, do not require long term anticoagulation and are associated with longer than expected survival in most patients with CHD [52]. However, they are not free from complications. For instance, in a study by Nguyen et al., three patients required surgical reintervention after valve thrombosis, and recurrent carcinoid fibrosis of the bioprosthetic valve was identified in three patients. Mechanical valves can be appropriate in patients who already require long term anticoagulation with warfarin for other reasons, or in young patients who have ovarian carcinoids and favorable prognosis after valve surgery and oophorectomy [53]. After surgery, TTE should be performed periodically to detect prosthetic dysfunction. Transcatheter therapies can then be used to treat bioprosthetic valve dysfunction. Continued intensive control of NETs and targeting a 5-HIAA level <300 mmol/L remain mainstays of treatment after valve surgery.

Peri-operatively, patients are at risk of a life-threatening condition carcinoid crisis. Carcinoid

crisis is mediated by a sudden release of vasoactive mediators into the intravascular circulation, and can result in hemodynamic instability and arrhythmias. This condition can be prevented by intravenous octreotide infusion at a rate of 50–100 mcg/hr, starting 12 hours before the procedure and continuing until the patient is stable postoperatively [54]. If a patient develops symptoms/signs of carcinoid crisis, treatments include administration of larger doses of octreotide (approximately 1000 micrograms), increasing the infusion rate to 100–200 mcg/h, and administering intravenous fluids. The complexity of this disease necessitates peri-operative planning by a multidisciplinary team of anesthesiologists, oncologists, cardiologists and cardiac surgeons.

Recent evidence suggests that correction of right sided valve disease and resultant congestive hepatopathy may improve noncardiac outcomes. In a series of 17 patients, 5-HIAA levels have been found to decrease by an average of 31% after right sided valve surgery, and to correlate with decreases in IVC diameter and bilirubin levels [55]. Whether this benefit in improved hepatic function and decreased tumoral production of serotonin improves long term prognosis is unknown.

Treatment of Arrhythmias in CHD

Cardiac arrhythmias can complicate the treatment of CHD. Owing to the occurrence of substantial atrioventricular valve regurgitation, atrial dilation and fibrosis are common. In a recently published series of 17 patients with carcinoid tumors (not restricted to those with heart involvement) who underwent catheter ablation, 76.5% had atrial arrhythmias [56]. In this series, ablation was safely performed without mortality in the peri-operative period. However, one case of carcinoid crisis occurred after ablation, thus highlighting the need for careful peri-operative management.

Bradyarrhythmias due to complete heart block can occur postoperatively, with an incidence of 12.5%, according to a recently published series [57]. Pacemaker implantation is safe and can be accomplished with minimal complications. The risk of heart block persists until 6 months after right sided valve surgery; consequently, some authors have recommended prophylactic placement of epicardial leads after surgery [58]. Heart block can

Table 2 Studies describing surgical outcomes in patients with CHD.

Name	Number of patients	Type of study	Outcomes	Limitations
Connolly et al. [7], 1995	26	Cross-sectional single center observational study	<ol style="list-style-type: none"> 1. The peri-operative mortality in the surgical group was high, at 35%, primarily because of metastatic hepatic disease 2. Marked symptomatic improvement was reported in the surgical intervention group compared with the control group 	<ol style="list-style-type: none"> 1. Heterogeneity in systemic and cardiac abnormalities; small sample size makes extrapolation of results difficult
Bhattacharya et al. [46], 2011	22	Retrospective single center cohort study	<ol style="list-style-type: none"> 1. Peri-operative mortality was 18%, mainly because of right ventricular dysfunction, carcinoid crisis and infection 2. Marked improvement in functional class was observed in patients who survived the surgery 	<ol style="list-style-type: none"> 1. Single center study with small sample size
Arghami et al. [47], 2010	7	Retrospective single center cohort study	<ol style="list-style-type: none"> 1. Quadruple valve replacement in symptomatic patients improved functional status 	<ol style="list-style-type: none"> 1. Single center study with small sample size
Mokhles et al. [48], 2011	19	Retrospective single center cohort study	<ol style="list-style-type: none"> 1. Improvement in functional capacity from New York Heart Association Functional Class III (NYHA-III) pre-operatively to class I was observed at the 1 year follow-up 2. Marked improvement in early postoperative survival (90%) was observed 	<ol style="list-style-type: none"> 1. Inability to identify the association between pre-operative 5-HIAA levels and per-operative mortality
Connolly et al. [49], 2015	195	Retrospective single center cohort study	<ol style="list-style-type: none"> 1. 30-day peri-operative mortality improved with time and experience, to 6% after year 2000 2. Survival rates at 1, 5 and 10 years were 69%, 35% and 24%, respectively 	<ol style="list-style-type: none"> 1. Retrospective-nonrandomized study design with a component of referral bias
Nguyen et al. [50] 2018	240	Retrospective and prospective cohort study	<ol style="list-style-type: none"> 1. Valvular surgery had a cumulative 30-day mortality of 9% over the past 3 decades 2. Early operative mortality decreased with increasing surgical experience and progression of time 3. Older age (HR:1.55, $P<0.001$), higher NYHA functional class (HR:1.53, $P<0.004$) and non-linear variability of creatinine (HR:0.81, $P=0.83$) emerged as independent predictors of overall mortality 	<ol style="list-style-type: none"> 1. Single center study with a potential influence of referral bias, despite being the largest study to date 2. Reproducibility of surgical results dependent on the experience of the multi-disciplinary team

rarely occur in the setting of intracardiac metastasis from a carcinoid tumor [59].

Rarer Manifestations of Carcinoid Heart Disease Without Valvular Involvement

Although rare, carcinoid syndrome can affect the heart beyond heart valve involvement, as follows:

- A) High output failure due to excess neurohormonal activation has been reported [60]. High output failure can be a manifestation of pellagra, which can occur because of diversion of the body's tryptophan stores from the production of niacin [61].
- B) Cardiac tumor metastasis is generally considered rare and can occur without valvular involvement. Before the era of advanced multimodal imaging, the incidence was approximately 4% [62]. In a recent series using cardiac CT imaging, the incidence has been found to be as high as 9% [63]. Although patients may remain asymptomatic, sudden death due to heart block or arrhythmias can occur [59]. Metastatectomy is usually considered when cardiac surgery is otherwise being performed to correct valvular diseases. In addition, metastatic carcinoid syndrome can induce coronary vasospasm, particularly in patients with non-obstructive coronary artery disease [25].

Prognosis of Carcinoid Heart Disease

The overall tumor burden (clinically determined by the degree of serotonin metabolite elevation) and the severity of cardiac structural abnormalities are important prognostic factors in CHD [5]. Cardiac valve replacement appears to improve prognosis.

Conclusion

Advances in medical and surgical therapies have improved outcomes in patients with carcinoid syndrome and CHD. Early detection of CHD and multidisciplinary team efforts in identifying patients who might benefit from cardiac interventions remain the cornerstone of management.

Conflict of Interest

All authors have reported that they have no relationships relevant to the contents of this paper to disclose.

Author Contributions

Both authors contributed to study conception. The first draft of the manuscript was written by SNG, and SV edited and contributed to the final version. Both authors have read and approved the final manuscript.

REFERENCES

1. Dasari A, Shen C, Halperin D, Zhao B, Zhou S, Xu Y, et al. Trends in the incidence, prevalence, and survival outcomes in patients with neuroendocrine tumors in the United States. *JAMA Oncol* 2017;3(10):1335–42.
2. Modlin IM, Sandor A. An analysis of 8305 cases of carcinoid tumors. *Cancer* 1997;79(4):813–29.
3. Pellikka PA, Tajik AJ, Khandheria BK, Seward JB, Callahan JA, Pitot HC, et al. Carcinoid heart disease. Clinical and echocardiographic spectrum in 74 patients. *Circulation* 1993; 87(4):1188–96.
4. Lundin L, Norheim I, Landelius J, Oberg K, Theodorsson-Norheim E. Carcinoid heart disease: relationship of circulating vasoactive substances to ultrasound-detectable cardiac abnormalities. *Circulation* 1988;77(2):264–9.
5. Westberg G, Wangberg B, Ahlman H, Bergh CH, Beckman-Suurkula M, Caidahl K. Prediction of prognosis by echocardiography in patients with midgut carcinoid syndrome. *Br J Surg* 2001;88(6):865–72.
6. Moller JE, Pellikka PA, Bernheim AM, Schaff HV, Rubin J, Connolly HM. Prognosis of carcinoid heart disease: analysis of 200 cases over two decades. *Circulation* 2005;112(21): 3320–7.
7. Connolly HM, Nishimura RA, Smith HC, Pellikka PA, Mullany CJ, Kvols LK. Outcome of cardiac surgery for carcinoid heart disease. *J Am Coll Cardiol* 1995;25(2):410–6.
8. Davar J, Connolly HM, Caplin ME, Pavel M, Zacks J, Bhattacharyya S, et al. Diagnosing and managing carcinoid heart disease in patients with neuroendocrine tumors: an expert statement. *J Am Coll Cardiol* 2017;69(10):1288–304.
9. Modlin IM, Kidd M, Latich I, Zikusoka MN, Shapiro MD. Current status of gastrointestinal carcinoids. *Gastroenterology* 2005;128(6): 1717–51.
10. Simula DV, Edwards WD, Tazelaar HD, Connolly HM, Schaff HV. Surgical pathology of carcinoid heart

- disease: a study of 139 valves from 75 patients spanning 20 years. *Mayo Clin Proc* 2002;77(2):139–47.
11. Laskaratos FM, Rombouts K, Caplin M, Toumpanakis C, Thirlwell C, Mandair D. Neuroendocrine tumors and fibrosis: an unsolved mystery? *Cancer* 2017;123(24):4770–90.
 12. Goldberg E, Grau JB, Fortier JH, Salvati E, Levy RJ, Ferrari G. Serotonin and catecholamines in the development and progression of heart valve diseases. *Cardiovasc Res* 2017;113(8):849–57.
 13. Gustafsson BI, Tommeras K, Nordrum I, Loennechen JP, Brunsvik A, Solligård E, et al. Long-term serotonin administration induces heart valve disease in rats. *Circulation* 2005;111(12):1517–22.
 14. Mekontso-Dessap A, Brouri F, Pascal O, Lechat P, Hanoun N, Lanfumey L, et al. Deficiency of the 5-hydroxytryptamine transporter gene leads to cardiac fibrosis and valvulopathy in mice. *Circulation* 2006;113(1):81–9.
 15. Lancellotti P, Nchimi A, Hego A, Dulgheru R, Delvenne P, Drion P, et al. High-dose oral intake of serotonin induces valvular heart disease in rabbits. *Int J Cardiol* 2015;197:72–5.
 16. Droogmans S, Franken PR, Garbar C, Weytjens C, Cosyns B, Lahoutte T, et al. In vivo model of drug-induced valvular heart disease in rats: pergolide-induced valvular heart disease demonstrated with echocardiography and correlation with pathology. *Eur Heart J* 2007;28(17):2156–62.
 17. Janssen W, Schymura Y, Novoyatleva T, Kojonazarov B, Boehm M, Wietelmann A, et al. 5-HT_{2B} receptor antagonists inhibit fibrosis and protect from RV heart failure. *Biomed Res Int* 2015;2015:438403.
 18. Dobson R, Burgess MI, Banks M, Pritchard DM, Vora J, Valle JW, et al. The association of a panel of biomarkers with the presence and severity of carcinoid heart disease: a cross-sectional study. *PLoS One* 2013;8(9):e73679.
 19. Zuetenhorst JM, Bonfrer JM, Korse CM, Bakker R, van Tinteren H, Taal BG. Carcinoid heart disease: the role of urinary 5-hydroxyindoleacetic acid excretion and plasma levels of atrial natriuretic peptide, transforming growth factor-beta and fibroblast growth factor. *Cancer* 2003;97(7):1609–15.
 20. Bhattacharyya S, Jagroop A, Gujral DM, Hayward C, Toumpanakis C, Caplin M, et al. Circulating plasma and platelet 5-hydroxytryptamine in carcinoid heart disease: a pilot study. *J Heart Valve Dis* 2013;22(3):400–7.
 21. Moller JE, Connolly HM, Rubin J, Seward JB, Modesto K, Pellikka PA. Factors associated with progression of carcinoid heart disease. *N Engl J Med* 2003;348(11):1005–15.
 22. Zanettini R, Antonini A, Gatto G, Gentile R, Tesei S, Pezzoli G. Valvular heart disease and the use of dopamine agonists for Parkinson's disease. *N Engl J Med* 2007;356(1):39–46.
 23. Mason JW, Billingham ME, Friedman JP. Methysergide-induced heart disease: a case of multivalvular and myocardial fibrosis. *Circulation* 1977;56(5):889–90.
 24. Horvath J, Fross RD, Kleiner-Fisman G, Lerch R, Stalder H, Liaudat S, et al. Severe multivalvular heart disease: a new complication of the ergot derivative dopamine agonists. *Mov Disord* 2004;19(6):656–62.
 25. Eapen DJ, Clements S, Jr, Block P, Sperling L. Metastatic carcinoid disease inducing coronary vasospasm. *Tex Heart Inst J* 2012;39(1):76–8.
 26. Bonsen LR, Aalbersberg EA, Tesselaar M, Stokkel MP. Cardiac neuroendocrine tumour metastases: case reports and review of the literature. *Nucl Med Commun* 2016;37(5):461–5.
 27. Langer C, Piper C, Vogt J, Heintze J, Butz T, Lindner O, et al. Atrial fibrillation in carcinoid heart disease: the role of serotonin. A review of the literature. *Clin Res Cardiol* 2007;96(2):114–8.
 28. Joish VN, Shah S, Tierce JC, Patel D, McKee C, Lapuerta P, et al. Serotonin levels and 1-year mortality in patients with neuroendocrine tumors: a systematic review and meta-analysis. *Future Oncol* 2019;15(12):1397–406.
 29. Bhattacharyya S, Toumpanakis C, Caplin ME, Davar J. Usefulness of N-terminal pro-brain natriuretic peptide as a biomarker of the presence of carcinoid heart disease. *Am J Cardiol* 2008;102(7):938–42.
 30. Gut P, Czarnywojtek A, Fischbach J, Bączyk M, Ziemnicka K, Wrotkowska E, et al. Chromogranin A - unspecific neuroendocrine marker. Clinical utility and potential diagnostic pitfalls. *Arch Med Sci* 2016;12(1):1–9.
 31. Bergestuen DS, Edvardsen T, Aakhus S, Ueland T, Oie E, Vatn M, et al. Activin A in carcinoid heart disease: a possible role in diagnosis and pathogenesis. *Neuroendocrinology* 2010;92(3):168–77.
 32. Bhattacharyya S, Toumpanakis C, Burke M, Taylor AM, Caplin ME, Davar J. Features of carcinoid heart disease identified by 2- and 3-dimensional echocardiography and cardiac MRI. *Circ Cardiovasc Imaging* 2010;3(1):103–11.
 33. Agha AM, Lopez-Mattei J, Donisan T, Balanescu D, Iliescu CA, Banchs J, et al. Multimodality imaging in carcinoid heart disease. *Open Heart* 2019;6(1):e001060.
 34. Moerman VM, Dewilde D, Hermans K. Carcinoid heart disease: typical findings on echocardiography and cardiac magnetic resonance. *Acta Cardiol* 2012;67(2):245–8.
 35. Denney WD, Kemp WE, Jr, Anthony LB, Oates JA, Byrd BF, 3rd. Echocardiographic and biochemical evaluation of the development and progression of carcinoid heart disease. *J Am Coll Cardiol* 1998;32(4):1017–22.
 36. Mansencal N, Mitry E, Bachet JB, Rougier P, Dubourg O. Echocardiographic follow-up of treated patients with carcinoid syndrome. *Am J Cardiol* 2010;105(11):1588–91.
 37. Dobson R, Cuthbertson DJ, Jones J, Valle JW, Keevil B, Chadwick C, et al. Determination of the optimal echocardiographic scoring system to quantify carcinoid heart disease. *Neuroendocrinology* 2014;99(2):85–93.

38. Rinke A, Muller HH, Schade-Brittinger C, Klohe KJ, Barth P, Wied M, et al. Placebo-controlled, double-blind, prospective, randomized study on the effect of octreotide LAR in the control of tumor growth in patients with metastatic neuroendocrine midgut tumors: a report from the PROMID Study Group. *J Clin Oncol* 2009;27(28):4656–63.
39. Caplin ME, Pavel M, Ćwikła JB, Phan AT, Raderer M, Sedláčková E, et al. Lanreotide in metastatic enteropancreatic neuroendocrine tumors. *N Engl J Med* 2014;371(3):224–33.
40. Oberg K. Interferon in the management of neuroendocrine GEP-tumors: a review. *Digestion* 2000; 62(Suppl 1):92–7.
41. Strosberg J, El-Haddad G, Wolin E, Hendifar A, Yao J, Chasen B, et al. Phase 3 Trial of (177)Lu-Dotatate for midgut neuroendocrine tumors. *N Engl J Med* 2017;376(2):125–35.
42. Kulke MH, Hörsch D, Caplin ME, Anthony LB, Bergsland E, Öberg K, et al. Telotristat ethyl, a tryptophan hydroxylase inhibitor for the treatment of carcinoid syndrome. *J Clin Oncol* 2017;35(1):14–23.
43. Pavel ME, Hainsworth JD, Baudin E, Peeters M, Hörsch D, Winkler RE, et al. Everolimus plus octreotide long-acting repeatable for the treatment of advanced neuroendocrine tumours associated with carcinoid syndrome (RADIANT-2): a randomised, placebo-controlled, phase 3 study. *Lancet* 2011; 378(9808):2005–12.
44. Papaxoinis G, Kordatou Z, McCallum L, Nasralla M, Lamarca A, Backen A, et al. Capecitabine and temozolomide in patients with advanced pulmonary carcinoid tumours. *Neuroendocrinology* 2020;110(5):413–21.
45. Gupta S. Intra-arterial liver-directed therapies for neuroendocrine hepatic metastases. *Semin Intervent Radiol* 2013;30(1):28–38.
46. Bhattacharyya S, Raja SG, Toumpanakis C, Caplin ME, Dreyfus GD, Davar J. Outcomes, risks and complications of cardiac surgery for carcinoid heart disease. *Eur J Cardiothorac Surg* 2011;40(1): 168–72.
47. Arghami A, Connolly HM, Abel MD, Schaff HV. Quadruple valve replacement in patients with carcinoid heart disease. *J Thorac Cardiovasc Surg* 2010;140(6):1432–4.
48. Mokhles P, van Herwerden LA, de Jong PL, de Herder WW, Siregar S, Constantinescu AA, et al. Carcinoid heart disease: outcomes after surgical valve replacement. *Eur J Cardiothorac Surg* 2012;41(6):1278–83.
49. Connolly HM, Schaff HV, Abel MD, Rubin J, Askew JW, Li Z, et al. Early and late outcomes of surgical treatment in Carcinoid Heart Disease. *J Am Coll Cardiol* 2015;66(20): 2189–96.
50. Nguyen A, Schaff HV, Abel MD, Luis SA, Lahr BD, Halfdanarson TR, et al. Improving outcome of valve replacement for carcinoid heart disease. *J Thorac Cardiovasc Surg* 2019;158(1):99–107 e102.
51. Baron E, Szymanski C, Hergault H, Lepère C, Dubourg O, Hauguel-Moreau M, et al. Progression of carcinoid heart disease in the modern management era. *J Am Heart Assoc* 2021;10(23):e020475.
52. Steeds R, Sagar V, Shetty S, Oelofse T, Singh H, Ahmad R, et al. Multidisciplinary team management of carcinoid heart disease. *Endocr Connect* 2019;8(12):R184–99.
53. Chaowalit N, Connolly HM, Schaff HV, Webb MJ, Pellikka PA. Carcinoid heart disease associated with primary ovarian carcinoid tumor. *Am J Cardiol* 2004;93(10):1314–5.
54. Ramage JK, Ahmed A, Ardill J, Bax N, Breen DJ, Caplin ME, et al. Guidelines for the management of gastroenteropancreatic neuroendocrine (including carcinoid) tumours (NETs). *Gut* 2012;61(1):6–32.
55. Shah HA, Sagar V, Hughes S, Khanna A, Yim I, Lodge F, et al. Surgical correction of carcinoid heart disease improves liver function and 5-hydroxyindoleacetic acid levels. *Front Surg* 2022;9:791058.
56. Shabtaie SA, Luis SA, Ward RC, Karki R, Connolly HM, Pellikka PA, et al. Catheter ablation in patients with neuroendocrine (Carcinoid) tumors and carcinoid heart disease: outcomes, peri-procedural complications, and management strategies. *JACC Clin Electrophysiol* 2021;7(2):151–60.
57. Ward RC, Luis SA, Shabtaie SA, Pellikka PA, Connolly HM, Miranda W, et al. Outcomes and periprocedural management of cardiac implantable electronic devices in patients with carcinoid heart disease. *Heart Rhythm* 2021;18(12): 2094–100.
58. Sunjic I, Shin D, Sunjic KM, Popat JV, Tran T, Chae SH, et al. Incidence of atrioventricular block after valve replacement in carcinoid heart disease. *Cardiol Res* 2020;11(1):56–60.
59. Das S, Pineda G, Berlin J, Hemphill B, Moslehi J, Nohria A, et al. Hidden figures: occult intra-cardiac metastases in asymptomatic neuroendocrine tumor patients. *J Oncol Cancer Res* 2018;2:23–7.
60. Yun D, Heywood JT. Metastatic carcinoid disease presenting solely as high-output heart failure. *Ann Intern Med* 1994;120(1):45–6.
61. Shah GM, Shah RG, Veillette H, Kirkland JB, Pasiaka JL, Warner RR. Biochemical assessment of niacin deficiency among carcinoid cancer patients. *Am J Gastroenterol* 2005;100(10):2307–14.
62. Pandya UH, Pellikka PA, Enriquez-Sarano M, Edwards WD, Schaff HV, Connolly HM. Metastatic carcinoid tumor to the heart: echocardiographic-pathologic study of 11 patients. *J Am Coll Cardiol* 2002;40:1328–1332.
63. Davar J, Lazoura O, Caplin ME, Toumpanakis C. Features of carcinoid heart disease identified by cardiac computed tomography. *J Cardiovasc Comput Tomogr* 2021; 15(2):167–74.

Supplementary Materials: Supplementary materials for this paper are available at the following link <https://cvia-journal.org/wp-content/uploads/2023/05/Supplementary-Table-26JUN2023.pdf>.