

ORIGINAL ARTICLE

Transcriptional regulation of the *MET* receptor tyrosine kinase gene by MeCP2 and sex-specific expression in autism and Rett syndromeJT Plummer¹, OV Evgrafov^{1,2}, MY Bergman³, M Friez⁴, CA Haiman⁵, P Levitt^{1,6} and KA Aldinger^{1,7}

Single nucleotide variants (SNV) in the gene encoding the *MET* receptor tyrosine kinase have been associated with an increased risk for autism spectrum disorders (ASD). The *MET* promoter SNV rs1858830 C 'low activity' allele is enriched in ASD, associated with reduced protein expression, and impacts functional and structural circuit connectivity in humans. To gain insight into the transcriptional regulation of *MET* on ASD-risk etiology, we examined an interaction between the methyl CpG-binding protein 2 (MeCP2) and the *MET* 5' promoter region. Mutations in MeCP2 cause Rett syndrome (RTT), a predominantly female neurodevelopmental disorder sharing some ASD clinical symptoms. MeCP2 binds to a region of the *MET* promoter containing the ASD-risk SNV, and displays rs1858830 genotype-specific binding in human neural progenitor cells derived from the olfactory neuroepithelium. MeCP2 binding enhances *MET* expression in the presence of the rs1858830 C allele, but *MET* transcription is attenuated by RTT-specific mutations in MeCP2. In the postmortem temporal cortex, a region normally enriched in *MET*, gene expression is reduced dramatically in females with RTT, although not due to enrichment of the rs1858830 C 'low activity' allele. We newly identified a sex-based reduction in *MET* expression, with male ASD cases, but not female ASD cases compared with sex-matched controls. The experimental data reveal a prominent allele-specific regulation of *MET* transcription by MeCP2. The mechanisms underlying the pronounced reduction of *MET* in ASD and RTT temporal cortex are distinct and likely related to factors unique to each disorder, including a noted sex bias.

Translational Psychiatry (2013) **3**, e316; doi:10.1038/tp.2013.91; published online 22 October 2013

Keywords: autistic disorder; gene expression regulation; methyl-CpG-binding protein 2

INTRODUCTION

Autism spectrum disorders (ASD) are common, heterogeneous neurodevelopmental disorders that are clinically defined by impairments in social behavior, communication, and restricted interests and repetitive behaviors.^{1–3} Common and rare single nucleotide variants (SNV) in many genes have been implicated as potential risk factors for ASD.^{4–9} Demonstrating ASD causality due to coding mutations can be difficult, but variants in regulatory regions of risk genes pose additional challenges to investigating the neurobiological consequences of and contribution to ASD pathophysiology. The *MET* receptor tyrosine kinase is one gene for which an ASD-associated SNV has been shown to have functional consequences for gene function. A common SNV in the *MET* 5' promoter region (rs1858830) was originally associated with ASD among families with multiple children diagnosed with ASD.¹⁰ This finding has since been replicated in additional case-control and family association studies.^{11–13} Additionally, *MET* expression is reduced in the temporal lobe of subjects with ASD.^{14,15} More recently, neuroimaging studies demonstrated that the rs1858830 C allele impacts functional activity and structural connectivity in regions involved in social cognition in typically developing subjects, with a more pronounced effect in individuals with

ASD.¹⁶ The rs1858830 C allele has also been associated with reduced gray matter growth in typically developing children and adolescents,¹⁷ consistent with findings in mouse models that reducing *MET* expression disrupts neuronal architecture¹⁸ and functional connectivity.¹⁹ These data converge on the original finding that the rs1858830 C allele reduces both nuclear protein binding to the *MET* promoter, and transcriptional activation of *MET*.¹⁰ Furthermore, brain and peripheral *MET* protein levels are significantly lower in the presence of the rs1858830 ASD-risk C allele compared with the non-risk G allele.^{14,20}

Like other receptor tyrosine kinases, transcriptional regulation of *MET* expression is important for both normal and disease processes.^{21,22} A number of transcription factors and DNA methylation patterns have been attributed to regulation of *MET* in cancer,^{22–25} but little is known regarding *MET* regulation in neural-relevant contexts. *MET* is a part of the biological network that includes several ASD-associated transcriptional regulators, including *FOXP2* and MeCP2.²⁶ *FOXP2* mutations increase risk for language disorders²⁷ and direct *FOXP2* binding to the 5' regulatory region of *MET* represses *MET* transcription.²⁸ Alterations in *MECP2* cause severe neurodevelopmental disorders including Rett syndrome (RTT) and rare cases of ASD.^{29–31} Given these findings, we hypothesized that

¹Zilkha Neurogenetic Institute, Keck School of Medicine, University of Southern California, Los Angeles, CA, USA; ²Department of Psychiatry and Behavioral Sciences, Keck School of Medicine, University of Southern California, Los Angeles, CA, USA; ³Vanderbilt University School of Medicine, Nashville, TN, USA; ⁴Greenwood Genetic Center, Greenwood, SC, USA; ⁵Department of Preventive Medicine, Keck School of Medicine, University of Southern California, Los Angeles, CA, USA and ⁶Department of Cell & Neurobiology, Keck School of Medicine, University of Southern California, Los Angeles, CA, USA. Correspondence: Dr KA Aldinger, Center for Integrative Brain Research, Seattle Children's Research Institute, 1900 9th Avenue, Seattle, 98101 WA, USA.

E-mail: kimberly.aldinger@seattlechildrens.org

⁷Current address: Center for Integrative Brain Research, Seattle Children's Research Institute, Seattle, WA, USA.

Received 26 June 2013; revised 4 September 2013; accepted 8 September 2013

MeCP2 was a strong candidate as an additional transcriptional regulator of *MET*. The present report provides multiple lines of evidence that support this hypothesis, and further uncovered a previously unrecognized ASD sex-based and RTT-associated disruption of *MET* expression in human neocortex.

MATERIALS AND METHODS

Cultured olfactory neuroepithelial cells

Protocols were approved by the Institutional Review Board at the University of Southern California and written informed consent was obtained from each subject. Genomic DNA samples from 27 control individuals that also had nasal biopsy tissue samples collected and olfactory neuroepithelial cultures established³² were genotyped for rs1858830 as described below. A total of nine cultured olfactory neuroepithelial cells (CNON) cells from male participants with mixed ancestry and representative rs1858830 genotypes were cultured as previously described.³²

Chromatin immunoprecipitation

Human embryonic kidney (HEK) cells and CNON cells ($n = 9$) were grown to a confluence of 1×10^7 cells on 10 cm dishes as previously described.^{32,33} Chromatin immunoprecipitation (ChIP) assays were conducted as previously described for HEK cells.³⁴ Approximately 25% of cells were pelleted and frozen for later RNA extraction. ChIP assays using CNON cells differed only in sonication time. Lysates from ON cells were sheared by sonication for a total of 8 min with pulsed intervals of 15 s ON and 45 s OFF on ice. For qPCR followed by ChIP, the LightCycler FastStart DNA Master^{PLUS} Kit (Promega, Madison, WI, USA) was used. Primers spanning 1.43 kb of 5' *MET* promoter were used for the ChIP qPCR (Supplementary Table S1). Assays were analyzed using a CFX96 real-time PCR detection system (Bio-Rad, Hercules, CA, USA). Fold enrichment was calculated relative to the immunoglobulin G ChIP and percent recovery was calculated relative to sample input. Total RNA was isolated from frozen CNON cell pellets ($n = 6$) and semi-quantitative real-time PCR was performed as previously³⁴ described using rs1858830 genotyping primers.¹⁰

Plasmid constructs

Luciferase reporter plasmids pGL4.10 (empty) and pGL4.10[luc2] containing 0.66 kb of *MET* promoter were previously described.¹⁰ Coexpression of MeCP2 was accomplished using a *MeCP2* cDNA clone (HsCD00081627) purchased from the DNASU repository (Bioscience Institute, Arizona State University, Tempe, AZ, USA). PCR was used to generate site-specific mutations in *MeCP2* cDNA. PCR mutagenesis was performed according to the method described in the QuikChange Site-Directed Mutagenesis Kit (Stratagene, La Jolla, CA, USA). We utilized the *MeCP2* cDNA plasmid as template and followed the manufacturer's primer design software (Stratagene). Primers are provided in Supplementary Table S1. All PCR was performed using Pfu Turbo (Stratagene) by initially denaturing the template at 95 °C for 30 s, followed by denaturing at 95 °C for 30 s, annealing at 60 °C for 1 min, extension at 68 °C for 7 min, with this cycle repeated 18 times. Original template DNA was digested by Dpn I treatment at 37 °C for 2 h. Digested DNA was transformed into XL1-Blue cells for blue-white screening (Stratagene). Positive clones were purified using Promega Wizard Purification Kit (Promega, Madison, WI, USA). The expected *MeCP2* mutations were verified by DNA sequencing.

MET 5' promoter luciferase assays

HEK cells were plated onto 12-well plates. Twenty-four hours post plating, 4 μ l of Lipofectamine2000 (Invitrogen, Carlsbad, CA, USA) was added to 600 μ l DMEM media containing a total of 0.3 μ g per well of the desired pGL4.10 reporter construct and/or *MECP2* expression construct and 0.5 μ g of the reference Renilla luciferase reporter was included. The Lipofectamine and DNA solutions were then combined following manufacturer recommendations. Following 24 h of culture, cell lysates were prepared according to the manufacturer's recommendations of the Dual Luciferase Reporter Assay System (Promega). Both firefly and Renilla luciferase products were measured in the Tecan Infinite 200 Plate Reader (San Jose, CA, USA). Firefly luciferase activity was compared with Renilla luciferase activity as a relative ratio. This ratio represents the transcriptional activity of a particular luciferase reporter construct. Fold of activation in the luciferase assays was calculated after normalization against the empty firefly control vector. Each experiment was performed minimally in triplicate.

RNA and DNA isolation from human postmortem brain samples
Fresh-frozen postmortem brain samples were obtained through the Autism Speaks-supported Autism Tissue Program at the Harvard Brain Tissue Resource Center (<http://www.brainbank.mclean.org/>) or the NICHD Brain and Tissue Bank at the University of Maryland School of Medicine (<http://www.medschool.umaryland.edu/BTBank/>). Superior temporal gyrus samples were obtained from 15 ASD and 5 RTT brain samples that were sex, age and postmortem interval (when possible) matched to 18 CTL brain samples.^{34,35} The majority of samples (37/38) were from individuals of European descent; one sample was from an individual of African-American descent. Total RNA was isolated using the mirVana miRNA Isolation Kit (Invitrogen) according to the manufacturer's protocol. Total RNA concentration was determined using an Agilent Bioanalyzer 2100 system (Santa Clara, CA, USA); average RNA integrity number (RIN) = 7.3. Genomic DNA isolation was performed previously.^{34,35}

MET rs1858830 genotyping in RTT and control samples

Genomic DNA was obtained for 193 unrelated females positive for *MECP2* mutation or exonic deletion from the Greenwood Genetic Center. An additional 15 genomic DNA samples from RTT females were purchased from the Coriell Cell Repository (<http://www.ccr.coriell.org/>). Genomic DNA samples from 514 unrelated females from the Multiethnic Cohort were used as controls.³⁶ DNA was amplified with the KOD Xtreme Hot Start PCR kit (EMD Biosciences, San Diego, CA, USA) according to the manufacturer's protocol using published primers.¹⁰ Amplicons were submitted for direct resequencing (BeckmanCoulter Genomics, Beverly, MA, USA or Eton Biosciences). Sequence electropherograms were analyzed using Sequencher v5.0 (Gene Codes Corporation, Ann Arbor, MI, USA). Autism Genetic Resource Exchange (AGRE) rs1858830 genotypes were previously determined^{10,11} and downloaded with permission from the AGRE website (<https://research.agre.org>). Population data for rs1858830 were downloaded from the 1000 Genomes Browser (<http://browser.1000genomes.org> (August 2012)). Allele and genotype data were analyzed using χ^2 and a two-sided $P < 0.05$ was considered significant. Allelic χ^2 results are presented. The Genetic Power Calculator (<http://pngu.mgh.harvard.edu/~purcell/gpc/>)³⁷ was used to estimate the power of the case-control association analyses.

Quantitative real-time PCR postmortem brain

cDNA was synthesized from total RNA using the SuperScript III First Strand cDNA Synthesis Kit (Invitrogen) according to the manufacturer's protocol using oligo dT primers. TaqMan Gene Expression assays for *MET* (assay ID Hs01565584_m1), *MECP2* (assay IDs Hs00172845_m1 (*MECP2_e1*) and Hs01598237 (*MECP2_e2*)), and glyceraldehyde-3-phosphate dehydrogenase (assay ID Hs9999905_m1) were purchased from Life Technologies (Carlsbad, CA, USA). qPCR was performed in triplicate for each sample using 100 ng cDNA and TaqMan Gene Expression Master Mix (Applied Biosystems, Foster City, CA, USA) according to the manufacturer's protocol. Assays were analyzed using a CFX Real-Time PCR detection system (Bio-Rad). The delta cycle threshold (ΔC_t) of target relative to glyceraldehyde-3-phosphate dehydrogenase was averaged for each sample. Analysis of variance was performed using ΔC_t values. Results are presented as relative expression of target compared with glyceraldehyde-3-phosphate dehydrogenase.

RESULTS

MeCP2 binds to the MET 5' promoter ASD-associated region

We first identified MeCP2 as a putative regulator of *MET* transcription during an *in vitro* TF screen using arrays containing 140 TF proteins (Supplementary Figure S1). An oligonucleotide probe generated from the 5' region of *MET* bound to several TF proteins, including Hand2, Lhx2 and MeCP2. We further investigated the putative binding of MeCP2 to the *MET* promoter using several additional assays. MeCP2 binds to CpG dinucleotides, having a complex role in transcriptional regulation during brain development.^{38,39} The *MET* 5' promoter harbors a putative 700 bp CpG island containing >70 CpG sites (Supplementary Methods and Figure 1a). We examined MeCP2 binding within the 5' *MET* promoter in HEK cells by ChIP. Anti-MeCP2 specifically precipitates *MET* DNA, whereas control immunoglobulin G yields no *MET*

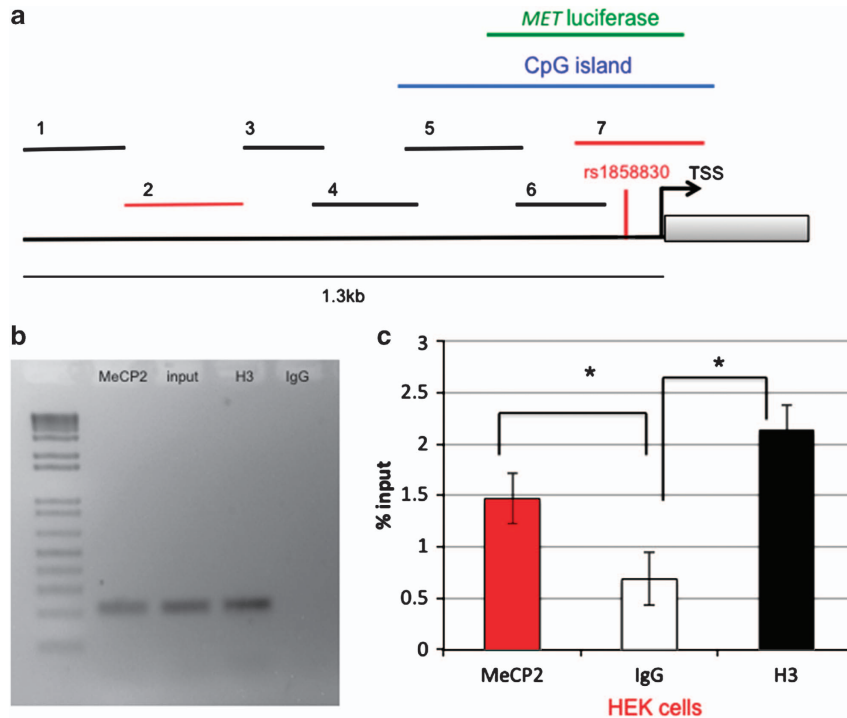


Figure 1. MeCP2 directly binds to the *MET* promoter. **(a)** Schematic of the 5' promoter region of *MET* drawn to scale; Human Genome Browser (hg19), chr7: 116098419–116099867. Horizontal lines indicate the relative locations for the CpG island (green), primers used in ChIP assays (gray), functional promoter variant (rs1858830), *MET* transcriptional start site (TSS). **(b)** Anti-MeCP2 antibody directly pulls down the *MET* promoter sequence using primers 2 and 7 (red bars). Anti-acetyl histone 3 (H3) and anti-immunoglobulin G (IgG) antibodies were used as positive and negative controls, respectively. **(c)** qPCR analysis of ChIP by MeCP2 of the *MET* promoter sequence using primer 7. * $P < 0.001$.

enrichment. PCR using primers tiled across the *MET* 5' promoter region revealed that MeCP2 binds to multiple regions (Figures 1a and b). By ChIP, we show robust MeCP2 binding within the CpG island (primers 2 and 7). Primer 7 includes the region that contains the rs1858830 ASD-risk SNV (Figures 1a and c and Supplementary Figure S2).

The rs1858830 C allele enhances MeCP2 transcriptional regulation of *MET*

To determine whether the rs1858830 SNV influences MeCP2 transcriptional regulation of *MET*, we transfected two luciferase reporter constructs containing 663 bp of the *MET* promoter (Figure 1a), differing only at the rs1858830 nucleotide, together with *MECP2* cDNA into HEK cells. First, we replicated previous findings¹⁰ that the reporter construct containing the G allele generates greater luciferase activity compared with the construct containing the C allele ($P = 0.022$; Figure 2a). Next, cells were cotransfected with *MECP2* cDNA and each of the two *MET* promoter constructs. Surprisingly, greater luciferase activity was detected when the C allele construct was cotransfected with *MECP2* compared with the C allele alone ($P = 0.0002$). No significant difference in luciferase activity was detected when the G allele was cotransfected with *MECP2* compared with the G allele alone ($P = 0.099$). In the presence of MeCP2, the C allele also showed greater transcriptional activity than the G allele ($P = 0.0001$). These data indicate that the rs1858830 C allele can directly modulate MeCP2 activation of *MET* transcription.

Overexpression of mutant *MECP2* impacts *MET* transcriptional regulation

To further establish a role for MeCP2 in the transcriptional activation of *MET*, we next tested whether RTT-causing *MECP2*

mutations could disrupt *MET* promoter activity. Several constructs containing common RTT-causing *MECP2* mutations located within the methyl-binding domain or the transcription repressor domain of MeCP2 (Figure 2b) were generated using site-directed mutagenesis. The mutant constructs were transfected into HEK cells and luciferase activity was monitored to assess transcriptional activity of the *MET* promoter (Figure 2c). Again, cotransfection of *MECP2* cDNA and the rs1858830 C allele construct activated *MET* transcription. A two-way ANOVA followed by Tukey HSD *post hoc* comparisons were used to evaluate the statistical significance of rs1858830 allele by *MECP2* mutation on *MET* transcription. Both rs1858830 allele and *MECP2* mutation had a significant effect on *MET* transcription ($P = 0.038$ and $P = 0.002$, respectively). The interaction between rs1858830 allele and *MECP2* mutation approached significance ($P = 0.055$). In comparison with wild-type *MECP2*, *MECP2* with p.T158M or p.R168X mutation failed to enhance the activation of the C allele ($P = 0.017$ and $P = 0.048$, respectively). Notably, no mutations in the methyl-binding domain of MeCP2 significantly altered *MET* transcription in the presence of the G allele compared with wild-type *MECP2* ($P \geq 0.879$). Mutations in the transcription repressor domain of MeCP2 (p.R270X and p.R306C) did not significantly alter *MET* transcriptional activation in the presence of either the C or G allele ($P \geq 0.627$). Thus, in the presence of the rs1858830 C allele, *MET* transcription is attenuated by RTT-specific mutations in MeCP2 (p.T158M and p.R168X) that impact the methyl-binding domain, but not those in the transcription repressor domain.

MeCP2-MET binding is ASD-risk rs1858830 genotype-dependent in neural progenitors

To examine allele-specific binding at rs1858830 by MeCP2, we performed ChIP on DNA isolated from cultured primary neural

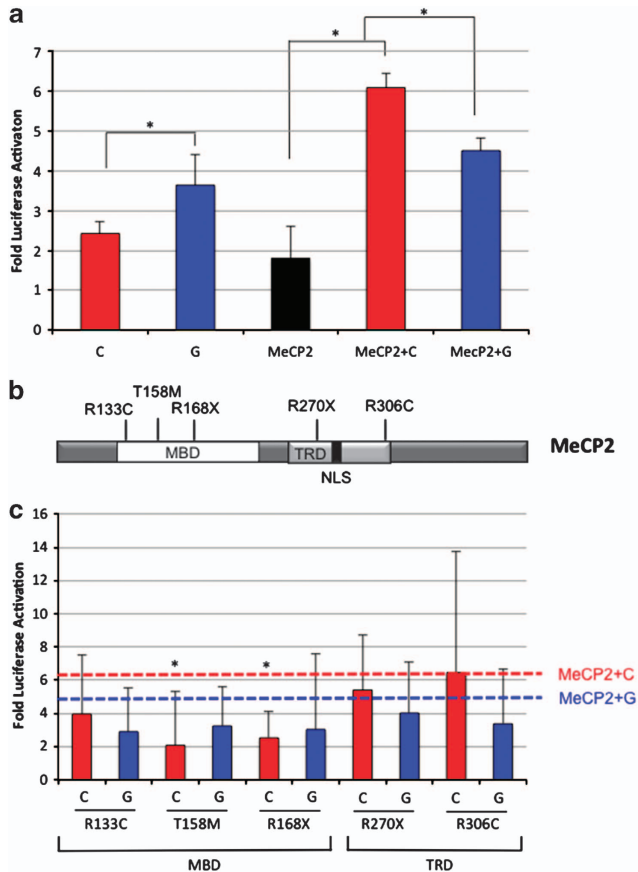


Figure 2. Functional characterization of MeCP2 and *MECP2* mutations on *MET* transcriptional activation. (a) Luciferase reporter assays demonstrate differential activation of the *MET* promoter by MeCP2. *MET* luciferase reporter constructs containing rs1858830 G or C were transiently transfected into HEK cells with or without addition of *MECP2* cDNA. * $P < 0.001$. (b) Schematic of the MeCP2 protein structure with common RTT-causing mutations (MBD; TRD, transcription repressor domain; NLS, nuclear localization signal). (c) Luciferase assays of *MECP2* mutations cotransfected with *MET* promoter luciferase showed altered transcription compared with wild-type *MECP2*. (red line-rs1858830 C allele + WT *MECP2*; blue line-rs1858830 G allele + WT *MECP2*). * $P < 0.05$ compared with rs1858830 allele (G or C respectively) + WT *MECP2*. Fold of luciferase activation was calculated after normalization against an empty luciferase control vector. All transfections were performed in triplicate.

progenitor cells derived from human olfactory neuroepithelium of normal subjects followed by qPCR using primers within the region containing rs1858830, as in the HEK ChIP experiments (Figure 3). Genomic DNA was previously isolated from peripheral blood samples from 27 control subjects who underwent a nasal biopsy.³² We determined the genotype at rs1858830 by direct sequencing and selected three different CNON for each of the three rs1858830 genotypes. Anti-MeCP2 specifically precipitates *MET* DNA in the presence of the ASD-risk genotype (CC), but not in the presence of the ASD-non-risk genotypes (GG and GC) ($P = 0.037$). The negative control immunoglobulin G does not yield enrichment of the *MET* sequence ($P = 0.642$). *MET* expression was not significantly different among the ASD-risk (CC), the heterozygous (GC) genotype and the non-risk (GG) genotypes ($P = 0.059$; Supplementary Figure S3). However, we noted a trend for increased *MET* expression in the CNON cells with the rs1858830 ASD-risk (CC) genotype.

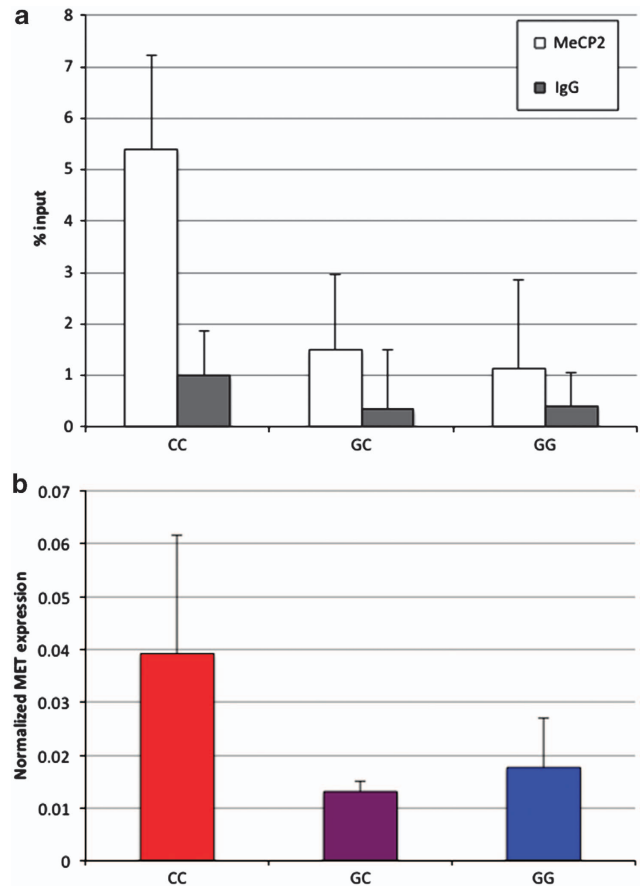


Figure 3. Differential binding of MeCP2 in the presence of rs1858830 ASD risk (C) and non-risk (G) alleles. Human CNON cells were assayed by ChIP using an anti-MeCP2 antibody. qPCR analysis using primer 7 showed increased MeCP2 binding to the *MET* promoter in CNON cells homozygous for the risk (CC) genotype compared with CNON cells heterozygous (GC) or homozygous for the non-risk (GG) allele. Results reflect the mean \pm s.e.m. across three CNON cells for each genotype. $P < 0.037$.

MET expression is reduced in postmortem brain tissue of females with RTT and males with ASD

Few risk genes implicated in ASD have been directly examined in RTT cases. Thus, in order to translate the *in vitro* findings of a direct MeCP2-*MET* interaction, we assayed *MET* expression by qPCR in temporal cortex from age-matched RTT and control females (Figure 4a). Temporal cortex was used due to the enrichment of *MET* expression in this region of primate neocortex.^{15,28,40,41} *MET* expression was reduced dramatically in the temporal cortex of females with RTT compared with sex-matched controls ($P = 0.007$).

A significant reduction in *MET* protein was previously described in the temporal cortex of individuals with ASD,¹⁴ with similar findings when transcript was examined;¹⁵ these studies comprise predominantly male subjects. The RTT findings raised the possibility of differential sex-based changes of *MET* in ASD. Thus, we assayed *MET* expression by qPCR in temporal cortex from age- and sex-matched ASD and control individuals (Figure 4b). There was a significant reduction in *MET* expression in the temporal cortex of all individuals with ASD compared with controls ($P = 0.032$), consistent with previous results. Stratification by sex further showed a significant reduction in *MET* expression in males ($P = 0.016$), but not females ($P = 0.720$), with ASD compared with controls (Figure 4c). *MET* expression is not different between male and female controls ($P = 0.403$).

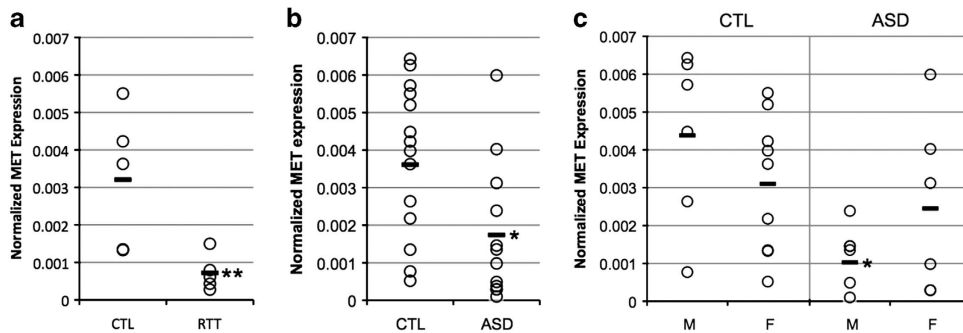


Figure 4. Sex-specific *MET* expression in postmortem brain of individuals with ASD. Samples are represented by open circles and group means are represented by horizontal bars. **(a)** *MET* expression in temporal cortex of females with RTT and controls (CTL). ****** $P < 0.001$ **(b)** *MET* expression in temporal cortex of individuals with ASD and controls. **(c)** *MET* expression in the temporal cortex of individuals with ASD and controls as shown in panel **b**, separated by sex. No significant difference in *MET* expression was detected between males (M) and females (F) among controls. ***** $P < 0.05$.

MET protein levels in the temporal cortex were previously associated with rs1858830 genotype in controls.¹⁴ Stratification by rs1858830 genotype showed reduced *MET* expression in ASD across all genotypes compared with controls (Supplementary Figure S4). Although there was no significant effect of rs1858830 genotype on *MET* expression for ASD ($P = 0.220$) or controls ($P = 0.969$), the C allele was overrepresented among the brain samples (59.7%). After correcting for rs1858830 genotype, *MET* expression remained significantly reduced in males ($P = 0.021$), and not females ($P = 0.269$), with ASD compared with controls. The C allele was also overrepresented in RTT. However, the lack of GG genotype precluded statistical power to perform the same analysis.

No difference in *MECP2* expression was detected in temporal cortex among cases and controls (Supplementary Figure S5), nor between males and females (Supplementary Figure S6).

The ASD-risk rs1858830 C allele is not associated with RTT

Results from the *in vitro* luciferase experiments suggest MeCP2 binds to the *MET* promoter regardless of which allele at the rs1858830 nucleotide is present. However, when the rs1858830 C allele is present, MeCP2 binding enhances *MET* transcription, unless the bound MeCP2 protein contains a mutation in the methyl-binding domain. These data predict *MET* should be expressed at normal levels in RTT, yet *MET* expression in temporal cortex is significantly reduced in RTT compared with controls. Previous studies have established that the rs1858830 C allele decreases *MET* transcription and leads to reduced *MET* protein levels in postmortem brain and peripheral cells.^{14,20} An association between *MET* expression and rs1858830 could not be evaluated in RTT brain due to insufficient sample size. To address whether the low *MET* expression in RTT could be explained by an enrichment of the rs1858830 C allele, we conducted a case-control study of females with RTT and unrelated, sex-matched unaffected subjects. Genotype at rs1858830 was determined by direct resequencing in 208 unrelated RTT and 514 control females. No significant differences in genotypic and allelic frequencies were detected between RTT and control females (Supplementary Table S2). The rs1858830 C allele frequencies also were not significantly different in females with RTT compared with the mothers of children with ASD ($P = 0.695$), the parents of children with ASD ($P = 0.786$), nor the allele frequencies in the 1000 Genomes Project⁴² ($P = 0.176$). The case-control analyses had 77–88% power to detect association in an allelic test with a relative risk of 2.27 for the CC genotype and 1.67 for the CG genotype, as reported in the initial association study.¹⁰ Similar results were found in a European-only analysis (Supplementary Table S3), suggesting that the lack of association

was not due to population stratification. Together, the expression and genotype data suggest that the mechanisms through which reduction of *MET* occurs in ASD and RTT are distinct and likely related to factors specific to each disorder.

DISCUSSION

The present study demonstrates binding of MeCP2 to the *MET* promoter that is functionally relevant, with regulation of *MET* transcription by MeCP2 influenced by the rs1858830 SNV *in vitro*. This regulation is likely to be cell context specific, as binding differences were discovered between HEK cells and primary human neural progenitors from the olfactory epithelium. Moreover, the analyses of postmortem brain samples from cases and controls for both ASD and RTT demonstrate sex-based differences in reduced *MET* expression, which has functional implications in light of the role of *MET* in cortical development and circuit function,^{16,18,19} and in individuals with ASD.⁴³ Although our data also reveal pronounced reduction of *MET* in both ASD and RTT temporal cortex, the sex-based differences appear to occur through distinct mechanisms, with males impacted in ASD and females in RTT. Future analyses are required to provide additional insight with regard to mechanisms, but irrespective of these differences, these findings indicate that like other molecules involved in synaptic and circuit development, disruption of *MET* expression in different neurodevelopmental disorders, either directly through genetic variants that impact transcription (ASD), or indirectly through as yet unknown factors (RTT), will have functional consequences that contribute to disorder symptoms.

Implications of MeCP2 Regulation of *MET*

MeCP2 acts as a global transcriptional regulator by recruiting chromatin-remodeling complexes or regulating higher-order chromatin structures.^{44–50} Thus, MeCP2 function may be determined by its interaction with numerous protein partners that produce functional outcomes, or MeCP2 may globally alter chromatin state to regulate transcription based on the status of DNA methylation and MeCP2 activation.⁵¹ Each of these scenarios is consistent with the modest changes in gene expression detected in human and mouse tissues with altered levels of *MECP2*.^{52–60} These complex molecular and biochemical interactions obfuscate the impact of MeCP2 transcriptional regulation of specific genes. Thus, few specific MeCP2-regulated genes are known.^{61–63} However, large number of genes are dysregulated in discrete brain regions of *Mecp2* mouse models,^{52,59,60} suggesting pronounced, yet restricted cell-specific influences of MeCP2 may depend on both developmental and physiological states.^{50,64–66}

These interactions would be difficult to discern in analyses of human brain tissue.

The indirect connection between *MET* and MeCP2, first highlighted in a network model of ASD-risk genes,²⁶ has been demonstrated as a direct relationship here using methodologies that measure both protein-to-DNA binding and transcriptional activity. MeCP2 binding to the *MET* promoter within CpG domains raises the possibility that there may be activity-dependent changes in DNA methylation status in combination with MeCP2-mediated chromatin state to regulate *MET* transcriptional regulatory complexes, as is seen with MeCP2 regulation in mouse brain development and function.^{50,67,68} This is consistent with the recent discovery of environmental factors that alter *MET* protein expression *in vitro* and *in vivo*,^{69,70} reflecting the regulatory sensitivity of this gene. The data measuring transcriptional activity of the *MET* promoter support this concept, as both the C and G allele are permissive for MeCP2-mediated transcriptional activity, but the magnitude of MeCP2 binding to the *MET* promoter was less pronounced in HEK cells relative to CNON cells. These findings indicate additional MeCP2 cofactors specific to neural progenitor cells are responsible for the differential activity of rs1858830 G versus C. Identifying the specific protein complexes that are influenced by MeCP2 binding to the *MET* promoter are part of ongoing investigations. Additionally, differences in DNA methylation at the *MET* promoter between HEK cells and CNON cells may contribute to the differential effects of MeCP2 transcriptional regulation detected here; future studies are required to test this possibility.

Sex-Based Differences in *MET* Expression in Neurodevelopmental Disorders

Perhaps most surprising in our studies was the finding that there are sex-based differences in *MET* expression in the temporal neocortex. This arose from our analysis of RTT postmortem neocortical tissue, which had not been investigated previously for *MET* expression. We based the rationale on two factors: (1) the cooccurrence of gastrointestinal disturbances in girls with RTT;⁷¹ the *MET* risk allele is enriched in children with ASD and gastrointestinal disturbances;⁷² and (2) in mice, *Mecp2* and *Met* fore-brain expression peaks during periods of dendritic growth and synaptic formation, and each mouse mutant displays synaptic hyperconnectivity⁶⁵ reminiscent of *MET* influence on functional activation and network connectivity in humans¹⁶. Though there were a limited number of RTT postmortem brains for analysis, the nearly undetectable levels of *MET* compared with matched female controls was highly statistically significant and has functional implications. Because reports of altered gene and protein expression in postmortem cases of ASD are generally dominated by male subjects (due to the 5:1 ratio of male:female diagnoses), minimal data were available on *MET* expression in females with ASD. In contrast to what we found in RTT, *MET* expression was reduced in male, but not female temporal neocortex. There are several noteworthy conclusions from these data. First, RTT and ASD only share some common clinical symptoms during the initial regressive period of RTT⁷³, suggesting there are distinct mechanisms that underlie the primary etiologies. Notably, a major difference between ASD and RTT etiology is deletion or mutation of *MECP2* in RTT patients. However, RTT remains a clinical diagnosis that displays a range of severity in its clinical presentation, suggesting additional factors modulate clinical characteristics. Our results suggest mutant MeCP2 binding fails to enhance *MET* expression in some cases, rather than decreases *MET* expression when the rs1858830 C allele is present, yet *MET* expression is reduced in RTT brain. In ASD, *MET* expression is reduced in the presence of the rs1858830 C allele^{14,20}. Thus, the factors that influence the sex-based reductions of *MET* must be disorder specific. Second, the ASD-associated rs1858830 C allele is

associated with severe social and communication phenotypes,⁴³ and is enriched even further in children with ASD and co-occurring gastrointestinal disturbances,⁷² yet it is not associated with RTT, which shows both severe communication and gastrointestinal disturbances phenotypes. There are several possible explanations. Other *MET* variants associated with ASD^{13,74} or variants in genes that regulate *MET* transcription could be enriched in RTT cases. Alternatively, non-heritable factors may contribute to the pronounced reduction in *MET*. These analyses raise the issue of whether there are fundamental sex-based differences in normal transcriptional regulation of *MET*, as well as of other ASD and neurodevelopmental disorder risk genes. Ongoing studies examining larger human female and male cohorts, as well as experiments in model systems are required to determine sex-based differences of intrinsic regulation and response to environmental factors in order to elucidate novel mechanisms relevant to understanding disorder etiologies.

CONFLICT OF INTEREST

The authors declare no conflict of interest.

ACKNOWLEDGMENTS

The authors thank Valeria Spitsyna and Evan Cohen for technical assistance. This work was supported by NIH grant MH067842 to PL and an Epilepsy Foundation of Greater Los Angeles fellowship to KAA.

REFERENCES

- 1 State MW, Levitt P. The conundrums of understanding genetic risks for autism spectrum disorders. *Nat Neurosci* 2011; **14**: 1499–1506.
- 2 Geschwind DH. Advances in autism. *Annu Rev Med* 2009; **60**: 367–380.
- 3 Berg JM, Geschwind DH. Autism genetics: searching for specificity and convergence. *Genome Biol* 2012; **13**: 247.
- 4 Klei L, Sanders SJ, Murtha MT, Hus V, Lowe JK, Willsey AJ *et al*. Common genetic variants, acting additively, are a major source of risk for autism. *Mol Autism* 2012; **3**: 9.
- 5 Sanders SJ, Murtha MT, Gupta MT, Gupta AR, Murdoch JD, Raubeson MJ *et al*. *De novo* mutations revealed by whole-exome sequencing are strongly associated with autism. *Nature* 2012; **485**: 237–241.
- 6 Lim ET, Raychaudhuri S, Sanders SJ, Stevens C, Sabo A, MacArthur DG *et al*. Rare complete knockouts in humans: Population distribution and significant role in autism spectrum disorders. *Neuron* 2013; **77**: 235–242.
- 7 Levy D, Ronemus M, Yamrom B, Lee YH, Leotta A, Kendall J *et al*. Rare *De Novo* and transmitted copy-number variation in autistic spectrum disorders. *Neuron* 2011; **70**: 886–897.
- 8 Gilman SR, Iossifov I, Levy D, Ronemus M, Wigler M, Vitkup D. Rare *De Novo* variants associated with autism implicate a large functional network of genes involved in formation and function of synapses. *Neuron* 2011; **70**: 898–907.
- 9 Scherer SW, Dawson G. Risk factors for autism: translating genomic discoveries into diagnostics. *Hum Genet* 2011; **130**: 123–148.
- 10 Campbell DB, Sutcliffe JS, Ebert PJ, Milner R, Bravaccio C, Trillo S *et al*. A genetic variant that disrupts *MET* transcription is associated with autism. *Proc Natl Acad Sci USA* 2006; **103**: 16834–16839.
- 11 Campbell DB, Li C, Sutcliffe JS, Persico AM, Levitt P. Genetic evidence implicating multiple genes in the *MET* receptor tyrosine kinase pathway in autism spectrum disorder. *Autism Res* 2008; **1**: 159–168.
- 12 Jackson PB, Boccuto L, Skinner C, Collins JS, Neri G, Gurrieri F *et al*. Further evidence that the rs1858830 C variant in the promoter region of the *MET* gene is associated with autistic disorder. *Autism Res* 2009; **2**: 232–236.
- 13 Sousa I, Clark TG, Toma C, Kobayashi K, Choma M, Holt R *et al*. *MET* and autism susceptibility: family and case-control studies. *Eur J Hum Genet* 2009; **17**: 749–758.
- 14 Campbell DB, D'Oronzio R, Garbett K, Ebert PJ, Mirnic K, Levitt P *et al*. Disruption of cerebral cortex *MET* signaling in autism spectrum disorder. *Ann Neurol* 2007; **62**: 243–250.
- 15 Voineagu I, Wang X, Johnston P, Lowe JK, Tian Y, Horvath S *et al*. Transcriptomic analysis of autistic brain reveals convergent molecular pathology. *Nature* 2011; **474**: 380–384.
- 16 Rudie JD, Hernandez LM, Brown JA, Beck-Pancer D, Colich NL, Gorrindo P *et al*. Autism-associated promoter variant in *MET* impacts functional and structural brain networks. *Neuron* 2012; **75**: 904–915.

- 17 Hedrick A, Lee Y, Wallace GL, Greenstein D, Clasen L, Giedd JN *et al*. Autism risk gene MET variation and cortical thickness in typically developing children and adolescents. *Autism Res* 2012; **5**: 434–439.
- 18 Judson MC, Eagleson KL, Wang L, Levitt P. Evidence of cell-nonautonomous changes in dendrite and dendritic spine morphology in the met-signaling-deficient mouse forebrain. *J Comp Neurol* 2010; **518**: 4463–4478.
- 19 Qiu S, Anderson CT, Levitt P, Shepherd GM. Circuit-specific intracortical hyperconnectivity in mice with deletion of the autism-associated MET receptor tyrosine kinase. *J Neurosci* 2011; **31**: 5855–5864.
- 20 Heuer L, Braunschweig D, Ashwood P, Van de Water J, Campbell DB. Association of a MET genetic variant with autism-associated maternal autoantibodies to fetal brain proteins and cytokine expression. *Transl Psychiatry* 2011; **1**: e48.
- 21 Judson MC, Eagleson KL, Levitt P. A new synaptic player leading to autism risk: MET receptor tyrosine kinase. *J Neurodev Disord* 2011; **3**: 282–292.
- 22 Trusolino L, Bertotti A, Comoglio PM. MET signalling: principles and functions in development, organ regeneration and cancer. *Nat Rev Mol Cell Biol* 2010; **11**: 834–848.
- 23 Liang H, O'Reilly S, Liu Y, Abounader R, Laterra J, Maher VM *et al*. Sp1 regulates expression of MET, and ribozyme-induced down-regulation of MET in fibrosarcoma-derived human cells reduces or eliminates their tumorigenicity. *Int J Oncol* 2004; **24**: 1057–1067.
- 24 Mascarenhas JB, Young KP, Littlejohn EL, Yoo BK, Salgia R, Lang D. PAX6 is expressed in pancreatic cancer and actively participates in cancer progression through activation of the MET tyrosine kinase receptor gene. *J Biol Chem* 2009; **284**: 27524–27532.
- 25 Wolff EM, Byun HM, Han HF, Sharma S, Nichols PW, Siegmund KD *et al*. Hypomethylation of a LINE-1 promoter activates an alternate transcript of the MET oncogene in bladders with cancer. *PLoS Genet* 2010; **6**: e1000917.
- 26 Bill BR, Geschwind DH. Genetic advances in autism: heterogeneity and convergence on shared pathways. *Curr Opin Genet Dev* 2009; **19**: 271–278.
- 27 Lai CS, Gerrelli D, Monaco AP, Fisher SE, Copp AJ. FOXP2 expression during brain development coincides with adult sites of pathology in a severe speech and language disorder. *Brain* 2003; **126**: 2455–2462.
- 28 Mukamel Z, Konopka G, Wexler E, Osborn GE, Dong H, Bergman MY *et al*. Regulation of MET by FOXP2, genes implicated in higher cognitive dysfunction and autism risk. *J Neurosci* 2011; **31**: 11437–11442.
- 29 Amir RE, Van den Veyver IB, Wan M, Tran CQ, Franke U, Zoghbi HY. Rett syndrome is caused by mutations in X-linked MECP2, encoding methyl-CpG-binding protein 2. *Nat Genet* 1999; **23**: 185–188.
- 30 Ramocki MB, Tavyev YJ, Peters SU. The MECP2 duplication syndrome. *Am J Med Genet A* 2010; **152A**: 1079–1088.
- 31 Carney RM, Wolpert CM, Ravan SA, Shahbazian M, Ashley-Koch A, Cuccaro ML *et al*. Identification of MeCP2 mutations in a series of females with autistic disorder. *Pediatr Neurol* 2003; **28**: 205–211.
- 32 Evgrafov OV, Wrobel BB, Kang X, Simpson G, Malaspina D, Knowles JA. Olfactory neuroepithelium-derived neural progenitor cells as a model system for investigating the molecular mechanisms of neuropsychiatric disorders. *Psychiatr Genet* 2011; **21**: 217–228.
- 33 Shimohigashi Y, Hatano R, Fujita T, Nakashima R, Nose T, Sujaku T *et al*. Sensitivity of opioid receptor-like receptor ORL1 for chemical modification on nociceptin, a naturally occurring nociceptive peptide. *J Biol Chem* 1996; **271**: 23642–23645.
- 34 Aldinger KA, Plummer JT, Levitt P. Comparative DNA methylation among females with neurodevelopmental disorders and seizures identifies TAC1 as a MeCP2 target gene. *J Neurodev Disord* 2013; **5**: 15.
- 35 Kerin T, Ramanathan A, Rivas K, Grepo N, Coetzee GA, Campbell DB. A noncoding RNA antisense to moesin at 5p14.1 in autism. *Sci Transl Med* 2012; **4**: 9–14.
- 36 Kolonel LN, Henderson BE, Hankin JH, Nomura AM, Wilkens LR, Pike MC *et al*. A multiethnic cohort in Hawaii and Los Angeles: baseline characteristics. *Am J Epidemiol* 2000; **151**: 346–357.
- 37 Purcell S, Cherny SS, Sham PC. Genetic power calculator: design of linkage and association genetic mapping studies of complex traits. *Bioinformatics* 2003; **19**: 149–150.
- 38 Moretti P, Zoghbi HY. MeCP2 dysfunction in Rett syndrome and related disorders. *Curr Opin Genet Dev* 2006; **16**: 276–281.
- 39 Guy J, Cheval H, Selfridge J, Bird A. The role of MeCP2 in the brain. *Ann Rev Cell Dev Biol* 2011; **27**: 631–652.
- 40 Judson MC, Amaral DG, Levitt P. Conserved subcortical and divergent cortical expression of proteins encoded by orthologs of the autism risk gene MET. *Cereb Cortex* 2011; **21**: 1613–1626.
- 41 Bernard A, Lubbers LS, Tanis KQ, Luo R, Podtezhnikov AA, Finney EM *et al*. Transcriptional architecture of the primate neocortex. *Neuron* 2012; **73**: 1083–1099.
- 42 Abecasis GR, Auton A, Books LD, DePristo MA, Durbin RM, Handsaker RE *et al*. An integrated map of genetic variation from 1,092 human genomes. *Nature* 2012; **491**: 56–65.
- 43 Campbell DB, Warren D, Sutcliffe JS, Lee EB, Levitt P. Association of MET with social and communication phenotypes in individuals with autism spectrum disorder. *Am J Med Genet B Neuropsychiatr Genet* 2012; **153B**: 438–446.
- 44 Bird A. The methyl-CpG-binding protein MeCP2 and neurological disease. *Biochem Soc Trans* 2008; **36**: 575–583.
- 45 Nan X, Campoy FJ, Bird A. MeCP2 is a transcriptional repressor with abundant binding sites in genomic chromatin. *Cell* 1997; **88**: 471–481.
- 46 Nan X, Ng HH, Johnson CA, Laherty CD, Turner BM, Eisenman RN *et al*. Transcriptional repression by the methyl-CpG-binding protein MeCP2 involves a histone deacetylase complex. *Nature* 1998; **393**: 386–389.
- 47 Meehan RR, Lewis JD, Bird AP. Characterization of MeCP2, a vertebrate DNA binding protein with affinity for methylated DNA. *Nucleic Acids Res* 1992; **20**: 5085–5092.
- 48 Skene PJ, Illingworth RS, Webb S, Kerr AR, James KD, Turner DJ *et al*. Neuronal MeCP2 is expressed at near histone-octamer levels and globally alters the chromatin state. *Mol Cell* 2010; **37**: 457–468.
- 49 Baker SA, Chen L, Wilkins AD, Yu P, Lichtarge O, Zoghbi HY. An AT-hook domain in MeCP2 determines the clinical course of Rett syndrome and related disorders. *Cell* 2013; **152**: 984–996.
- 50 Cohen S, Gabel HW, Hemberg M, Hutchinson AN, Sadacca LA, Ebert DH *et al*. Genome-wide activity-dependent MeCP2 Phosphorylation regulates nervous system development and function. *Neuron* 2011; **72**: 72–85.
- 51 McGinty JF. The many faces of MeCP2. *Neuropsychopharmacology* 2012; **37**: 313–314.
- 52 Tudor M, Akbarian S, Chen RZ, Jaenisch R. Transcriptional profiling of a mouse model for Rett syndrome reveals subtle transcriptional changes in the brain. *Proc Natl Acad Sci U S A* 2002; **99**: 15536–15541.
- 53 Nectoux J, Fichou Y, Rosas-Vargas H, Cagnard N, Bahi-Buisson N, Nusbaum P *et al*. Cell cloning-based transcriptome analysis in Rett patients: relevance to the pathogenesis of Rett syndrome of new human MeCP2 target genes. *J Cell Mol Med* 2010; **14**: 1962–1974.
- 54 Ballestar E, Yusufzai TM, Wolffe AP. Effects of Rett syndrome mutations of the methyl-CpG binding domain of the transcriptional repressor MeCP2 on selectivity for association with methylated DNA. *Biochemistry* 2000; **39**: 7100–7106.
- 55 Colantuoni C, Jeon OH, Hyder K, Chenchik A, Khimani AH, Narayanan V *et al*. Gene expression profiling in postmortem Rett Syndrome brain: differential gene expression and patient classification. *Neurobiol Dis* 2001; **8**: 847–865.
- 56 Delgado IJ, Kim DS, Thatcher KN, LaSalle JM, Van den Veyver IB. Expression profiling of clonal lymphocyte cell cultures from Rett syndrome patients. *BMC Med Genet* 2006; **7**: 61.
- 57 Deng V, Matagne V, Bamine F, Frerking M, Ohliger P, Budden S *et al*. FXD1 is an MeCP2 target gene overexpressed in the brains of Rett syndrome patients and Mecp2-null mice. *Hum Mol Genet* 2007; **16**: 640–650.
- 58 Gibson JH, Slobedman B, KN H, Williamson SL, Minchenko D, El-Osta A *et al*. Downstream targets of methyl CpG binding protein 2 and their abnormal expression in the frontal cortex of the human Rett syndrome brain. *BMC Neurosci* 2010; **11**: 53.
- 59 Chahrouh M, Jung SY, Shaw C, Zhou X, Wong ST, Qin J *et al*. MeCP2, a key contributor to neurological disease, activates and represses transcription. *Science* 2008; **320**: 1224–1229.
- 60 Ben-Shachar S, Chahrouh M, Thaller C, Shaw CA, Zoghbi HY. Mouse models of MeCP2 disorders share gene expression changes in the cerebellum and hypothalamus. *Hum Mol Genet* 2009; **18**: 2431–2442.
- 61 Abuhatzira L, Makedonski K, Kaufman Y, Razin A, Shemer R. MeCP2 deficiency in the brain decreases BDNF levels by REST/CoREST-mediated repression and increases TRKB production. *Epigenetics* 2007; **2**: 214–222.
- 62 Swanberg SE, Nagarajan RP, Peddada S, Yasui DH, LaSalle JM. Reciprocal co-regulation of EGR2 and MECP2 is disrupted in Rett syndrome and autism. *Hum Mol Genet* 2009; **18**: 525–534.
- 63 Zocchi L, Sassone-Corsi P. SIRT1-mediated deacetylation of MeCP2 contributes to BDNF expression. *Epigenetics* 2012; **7**: 695–700.
- 64 Durand S, Patrizi A, Quast KB, Hachigian L, Pavlyuk R, Saxena A *et al*. NMDA receptor regulation prevents regression of visual cortical function in the absence of Mecp2. *Neuron* 2012; **76**: 1078–1090.
- 65 Shepherd GM, Katz DM. Synaptic microcircuit dysfunction in genetic models of neurodevelopmental disorders: focus on Mecp2 and Met. *Curr Opin Neurobiol* 2011; **21**: 827–833.
- 66 Kishi N, Macklis JD. MeCP2 functions largely cell-autonomously, but also non-cell-autonomously, in neuronal maturation and dendritic arborization of cortical pyramidal neurons. *Exp Neurol* 2010; **222**: 51–58.
- 67 Chen WG, Chang Q, Lin Y, Meissner A, West AE, Griffith EC *et al*. Derepression of BDNF transcription involves calcium-dependent phosphorylation of MeCP2. *Science* 2003; **302**: 885–889.
- 68 Zhou Z, Hong EJ, Cohen S, Zhao WN, Ho HY, Schmidt L *et al*. Brain-specific phosphorylation of MeCP2 regulates activity-dependent Bdnf transcription, dendritic growth, and spine maturation. *Neuron* 2006; **52**: 255–269.

- 69 Eagleson KL, Campbell DB, Thompson BL, Bergman MY, Levitt P. The autism risk genes MET and PLAU1 differentially impact cortical development. *Autism Res* 2011; **4**: 68–83.
- 70 Sheng L, Ding X, Ferguson M, McCallister M, Rhoades R, Maguire M *et al*. Prenatal polycyclic aromatic hydrocarbon exposure leads to behavioral deficits and downregulation of receptor tyrosine kinase, MET. *Toxicol Sci* 2010; **118**: 625–634.
- 71 Motil KJ, Caeg E, Barrish JO, Geerts S, Lane JB, Percy AK *et al*. Gastrointestinal and nutritional problems occur frequently throughout life in girls and women with Rett syndrome. *J Pediatr Gastroenterol Nutr* 2012; **55**: 292–298.
- 72 Campbell DB, Buie TM, Winter H, Bauman M, Sutcliffe JS, Perrin JM *et al*. Distinct genetic risk based on association of MET in families with co-occurring autism and gastrointestinal conditions. *Pediatrics* 2009; **123**: 1018–1024.
- 73 Percy AK. Rett syndrome: exploring the autism link. *Arch Neurol* 2011; **68**: 985–989.
- 74 Thanseem I, Nakamura K, Miyachi T, Toyota T, Yamada S, Tsujii M *et al*. Further evidence for the role of MET in autism susceptibility. *Neurosci Res* 2010; **68**: 137–141.



This work is licensed under a Creative Commons Attribution-NonCommercial-NoDerivs 3.0 Unported License. To view a copy of this license, visit <http://creativecommons.org/licenses/by-nc-nd/3.0/>

Supplementary Information accompanies the paper on the Translational Psychiatry website (<http://www.nature.com/tp>)