

# Cytotoxic effects of bromelain in human gastrointestinal carcinoma cell lines (MKN45, KATO-III, HT29-5F12, and HT29-5M21)

Afshin Amini  
Anahid Ehteda  
Samar Masoumi  
Moghaddam  
Javed Akhter  
Krishna Pillai  
David Lawson Morris

Department of Surgery, St George Hospital, University of New South Wales, Sydney, NSW, Australia

**Background:** Bromelain is a pineapple stem extract with a variety of therapeutic benefits arising from interaction with a number of different biological processes. Several preclinical studies and anecdotal clinical observations have reported the anticancer properties of bromelain. In the present study, we investigated the cytotoxic effects of bromelain in four human cancer cell lines of gastrointestinal origin and the mechanisms involved.

**Methods:** The gastric carcinoma cell lines (KATO-III and MKN45) and two chemoresistant subpopulations of the HT29 colon adenocarcinoma cell line (HT29-5M21 and HT29-5F12) were treated with a range of concentrations of bromelain, as well as with cisplatin as a positive control. The effect of bromelain on the growth and proliferation of cancer cells was determined using a sulforhodamine B assay after 72 hours of treatment. Expression of apoptosis-associated proteins in MKN45 cells treated with bromelain was analyzed by Western blotting.

**Results:** Data from our sulforhodamine B assay showed that bromelain inhibited proliferation of HT29-5F12, HT29-5M21, MKN45, and KATO-III cells, with respective half maximal inhibitory concentration values of 29, 34, 94, and 142  $\mu\text{g}/\text{mL}$ . Analyzing the expression of proapoptotic and antiapoptotic proteins in bromelain-treated MKN45 cells, we observed activation of the caspase system, cleavage of PARP and p53, overexpression of cytochrome C, attenuation of phospho-Akt and Bcl2, and removal of MUC1. Apart from the caspase-dependent apoptosis observed, emergence of cleaved p53 supports a direct, extranuclear apoptotic function of p53. Moreover, interrupted Akt signaling and attenuation of Bcl2 and MUC1 oncoproteins suggest impaired survival of cancer cells.

**Conclusion:** Our findings collectively indicate that bromelain exerts cytotoxic effects in a panel of human gastric and colon carcinoma cells. Our study of MKN45 cells implicated different mechanisms in bromelain-induced cell death. While promoting apoptosis with involvement of the caspase system and extranuclear p53, bromelain also appears to impair cancer cell survival by blocking the Akt pathway and attenuating Bcl2 and MUC1 oncoproteins.

**Keywords:** bromelain, cytotoxicity, gastrointestinal carcinoma, MKN45, KATO-III, HT29

## Introduction

Pineapple, botanically named *Ananas comosus*, has been used for centuries as a folk medicine by the indigenous inhabitants of Central and South America to treat a range of ailments. The medicinal qualities of the plant are attributed to bromelain, a pineapple stem extract, which has been available as a pharmaceutical product since 1956.<sup>1</sup> The beneficial effects of bromelain are attributable to its multiple constituents. Although primarily comprised of sulfhydryl-containing proteolytic enzymes, bromelain also contains escharase (a nonproteolytic component with debriding effects),<sup>2</sup> peroxidase, acid phosphatase, glucosidases, cellulases, several protease inhibitors, glycoproteins,

Correspondence: Professor David L Morris  
Level 3, Pitney Clinical Sciences Bldg,  
The St George Hospital, Kogarah,  
NSW 2217, Australia  
Email david.morris@unsw.edu.au

carbohydrates, and organically bound calcium.<sup>3,4</sup> Bromelain has shown an ability to interact with a variety of effectors and pathways involved in physiological processes, including inflammation, the immune response, and coagulation. Thus, the therapeutic potential of bromelain, alone or in combination with other agents, has been tested in preclinical and clinical settings, suggesting a number of clinical indications.<sup>5</sup> However, as an anticancer agent, bromelain has been the subject of limited preclinical and clinical observations.<sup>6</sup>

Gastrointestinal cancers account for more than one third of all deaths from malignant neoplasms worldwide,<sup>7</sup> among which colorectal and stomach cancers are the most common.<sup>8</sup> In the present study, as an initial attempt towards implementing a novel approach to the management of advanced gastrointestinal carcinoma, the anticancer efficacy of bromelain was investigated in a range of gastrointestinal carcinoma cells. To explore the efficacy of bromelain in a more comprehensive way, gastrointestinal cancer cells of different origins and various sensitivities to cytotoxic agents were employed. These included poorly differentiated human gastric cancer cell lines (MKN45 and KATO-III) and chemoresistant subpopulations of the HT29 human colon cancer cell line (HT29-5F12 and HT29-5M21).

## Materials and methods

### Cell culture

The human gastric carcinoma cell lines (MKN45 and KATO-III) were obtained from the Cancer Research Campaign Laboratories (University of Nottingham, NG7 2RD, UK) and the American Type Culture Collection (Manassas, VA, USA), respectively. The HT29-5F12 and HT29-5M21 cells were a kind gift from Dr Thécla Lesuffleur (Université Pierre et Marie Curie, Paris, France). All cell lines were maintained in a humidified atmosphere of 95% air and 5% CO<sub>2</sub> at 37°C in their respective media as follows: MKN45 in RPMI-1640, KATO-III cells in Iscove's Dulbecco's modified Eagle's medium, and HT29-5F12 and HT29-5M21 cells in Dulbecco's modified Eagle's medium (all from Invitrogen, Carlsbad, CA, USA). All of the culture media used were supplemented with 10% (v/v) fetal bovine serum and 1% (v/v) penicillin-streptomycin (Invitrogen), with the exception of Iscove's Dulbecco's modified Eagle's medium, for which 20% fetal bovine serum supplementation was used.

### Drug preparation

Bromelain and cisplatin were purchased from Sigma-Aldrich (St Louis, MO, USA). Bromelain and cisplatin stock solutions were prepared at concentrations of 1000 µg/mL and

15,000 µg/mL, respectively. For each experiment, bromelain stock solution was freshly made, filtered, and diluted with the appropriate culture medium to achieve the final treating concentrations.

### Proliferation assay

The effect of bromelain on growth and proliferation of MKN45, KATO-III, HT29-5F12, and HT29-5M21 cells was determined using the sulforhodamine B assay. In brief, the cells were seeded into 96-well plates and cultured in complete culture medium at densities of 1500–5000 cells per well. At the desired confluence, the cells were treated for 72 hours with a range of concentrations of bromelain (5–1000 µg/mL) in serum-free medium, as well as with cisplatin as the positive control. At the end of the treatment period, the cells were fixed by 30 minutes of incubation with 10% (w/v) trichloroacetic acid at 4°C. This was followed by five washes with slow-running tap water. The plates were then stained with 0.4% (w/v) sulforhodamine B (Sigma-Aldrich) dissolved in 1% acetic acid. Unbound dye was removed by rinsing the plates with 1% acetic acid, and the plates were then allowed to dry out at room temperature. Bound sulforhodamine B was solubilized with 10 mM Tris base (Sigma-Aldrich) and absorbance was read using a microplate reader (PowerWaveX, Bio-Tek Instruments Inc, Winooski, VT, USA) with a working wavelength of 570 nm.

### Western blotting

The efficacy of bromelain in activating apoptotic processes and modulating expression of apoptosis-associated proteins was explored in MKN45 cells using Western blotting. Briefly, the cells were homogenized in protein lysis buffer (RIPA) containing 10% protease inhibitor (Sigma-Aldrich), and the protein concentrations were then quantified using a BioRad protein assay (Bio-Rad Laboratories, Hercules, CA, USA). Equal amounts of proteins were separated by sodium dodecyl sulfate–polyacrylamide gel electrophoresis and transferred to polyvinylidene fluoride membranes (Millipore, Bedford, MA, USA). The following primary antibodies were then applied to the membranes according to the manufacturers' protocols: rabbit polyclonal anticaspase 3, anti-Bcl2, anti-p53 (Santa Cruz Biotechnology, Santa Cruz, CA, USA), anticaspase 8 (R&D Systems, Minneapolis, MN, USA), anticaspase 9, anti-PARP, anticytochrome C, anti-Akt, rabbit monoclonal antiphospho-Akt, and mouse monoclonal anti-MUC1 (Cell Signaling Technology Inc, Danvers, MA, USA). The membranes were washed and treated with the appropriate horseradish peroxidase-conjugated secondary antibodies (Cell

Signaling Technology Inc). A similar process was carried out for  $\beta$ -actin as a loading control using mouse monoclonal anti- $\beta$ -actin antibody (Santa Cruz Biotechnology). The antigen-antibody reaction was visualized using ImageQuant LAS 4000 Biomolecular imager and ImageQuant software (GE Healthcare, Chalfont, UK). Band densitometry was quantified and the data were normalized against the values of  $\beta$ -actin protein expression.

## Statistical analysis

All data presented are representative of three independent experiments. Statistical analyses were performed using GraphPad InStat (GraphPad Prism 5, San Diego, CA, USA). The Student's *t*-test was applied for unpaired samples and *P* values < 0.05 were considered to be statistically significant.

## Results

### Bromelain inhibited proliferation of human gastrointestinal carcinoma cells

Using the sulforhodamine B assay, we investigated the potential of bromelain to inhibit growth of gastrointestinal cancer cells. As shown in Figure 1, bromelain significantly inhibited cell proliferation in MKN45 (*P* = 0.0018, 0.0010, 0.0002, and <0.0001 using concentrations of 100, 200, 400, and 600  $\mu$ g/mL, respectively), KATO-III (*P* < 0.0001 using concentrations of 100, 200, and 400  $\mu$ g/mL, respectively), and 5F12 and 5M21 (*P* < 0.0001 using concentrations of 40 and 50  $\mu$ g/mL, respectively). Fifty percent inhibitory concentration ( $IC_{50}$ ) values were calculated from concentration-response curves plotting growth percentage versus drug concentration using GraphPad Prism 5 (Figure 1). Our data revealed  $IC_{50}$  values of 29, 34, 94, and 142  $\mu$ g/mL for HT29-5F12, HT29-5M21, MKN45, and KATO-III cells, respectively.

### Bromelain induced caspase-dependent apoptosis

To investigate the inhibitory effects of bromelain observed in the proliferation assay further, the implication of caspase-driven apoptotic events was evaluated by examining expression of cytochrome C, caspases 3, 8, and 9 in MKN45 cells after 72 hours of treatment with concentrations ranging from 25 to 200  $\mu$ g/mL (Figure 2). Along with overexpression of cytochrome C, the appearance of immunoreactive subunits of caspase 3 and caspase 8, as well as withering of procaspase 9, was observed in a concentration-dependent manner. Moreover, the functionality of activated caspase 3 was confirmed by cleavage of PARP. Expression of cleaved PARP

was more prominent at a concentration of 200  $\mu$ g/mL, where the precursor protein was no longer detectable.

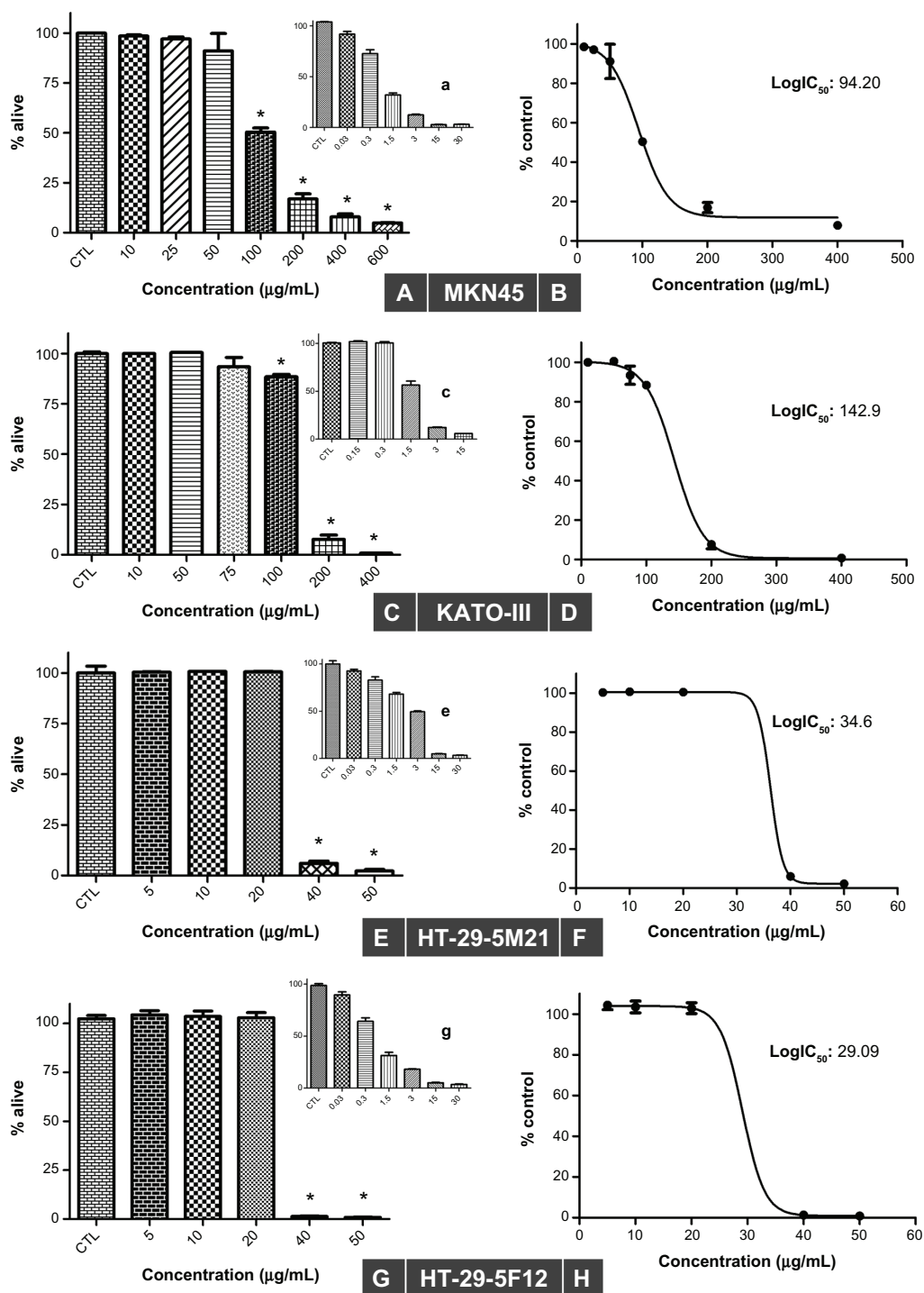
### Bromelain caused cleavage of p53, removal of MUC1, and attenuation of phospho-Akt and Bcl2

Exploring the role of other mediators of apoptosis, our results showed cleavage of p53 protein and emergence of cleaved fragments at concentrations of 100  $\mu$ g/mL and 200  $\mu$ g/mL. Moreover, disappearance of MUC1, along with attenuation of phospho-Akt and Bcl2, occurred when the MKN45 cells were treated with a bromelain concentration of 200  $\mu$ g/mL (Figure 2).

## Discussion

In this study, we observed the efficacy of bromelain in inhibiting growth and proliferation of four human gastrointestinal cancer cell lines in vitro. Clinical evaluation of the efficacy of bromelain as an anticancer agent, alone or in combination with other agents, has been confined to few anecdotal observations.<sup>6</sup> This may have stemmed from inadequate preclinical studies. Our literature search of PubMed yielded a limited number of investigations which had explored the anticancer effects of bromelain in preclinical settings, few of which had used cancer cells of human origin. Taussig et al reported bromelain-induced growth inhibition in three mouse tumor cell lines.<sup>9</sup> Tysnes et al indicated a role of bromelain in reversibly inhibiting the invasive properties of glioma cells.<sup>10</sup> In a study by Beuth et al, treatment with bromelain led to significant reduction of tumor growth in mice inoculated by murine sarcoma L-1 cells.<sup>11</sup> In vivo antitumoral and antimetastatic activity of bromelain against a panel of murine cancer cell lines has been shown by Baez et al.<sup>12</sup> Kalra et al reported reduced formation of mouse skin tumor with bromelain,<sup>13</sup> and Paroulek et al demonstrated the antitumor effects of bromelain against the GI101A human breast cancer cell line.<sup>14</sup> Bhui et al also demonstrated that pretreatment with bromelain reduced the number and volume of murine skin tumors,<sup>15</sup> and recently showed that bromelain had an antiproliferative effect against human A431 epidermoid carcinoma and A375 melanoma cells.<sup>16</sup>

Our study of MKN45 cells demonstrates that bromelain induces caspase-dependent apoptotic cell death. Earlier studies have reported the proapoptotic effects of bromelain in a number of in vitro and in vivo cancer models. In their mouse models, Kalra et al and Bhui et al observed that treatment with bromelain resulted in upregulation of p53 and subsequent activation of caspase 3 and caspase 9.<sup>13,15</sup> Using the M30 Apoptosense<sup>®</sup> assay (Peviva, Bromma,

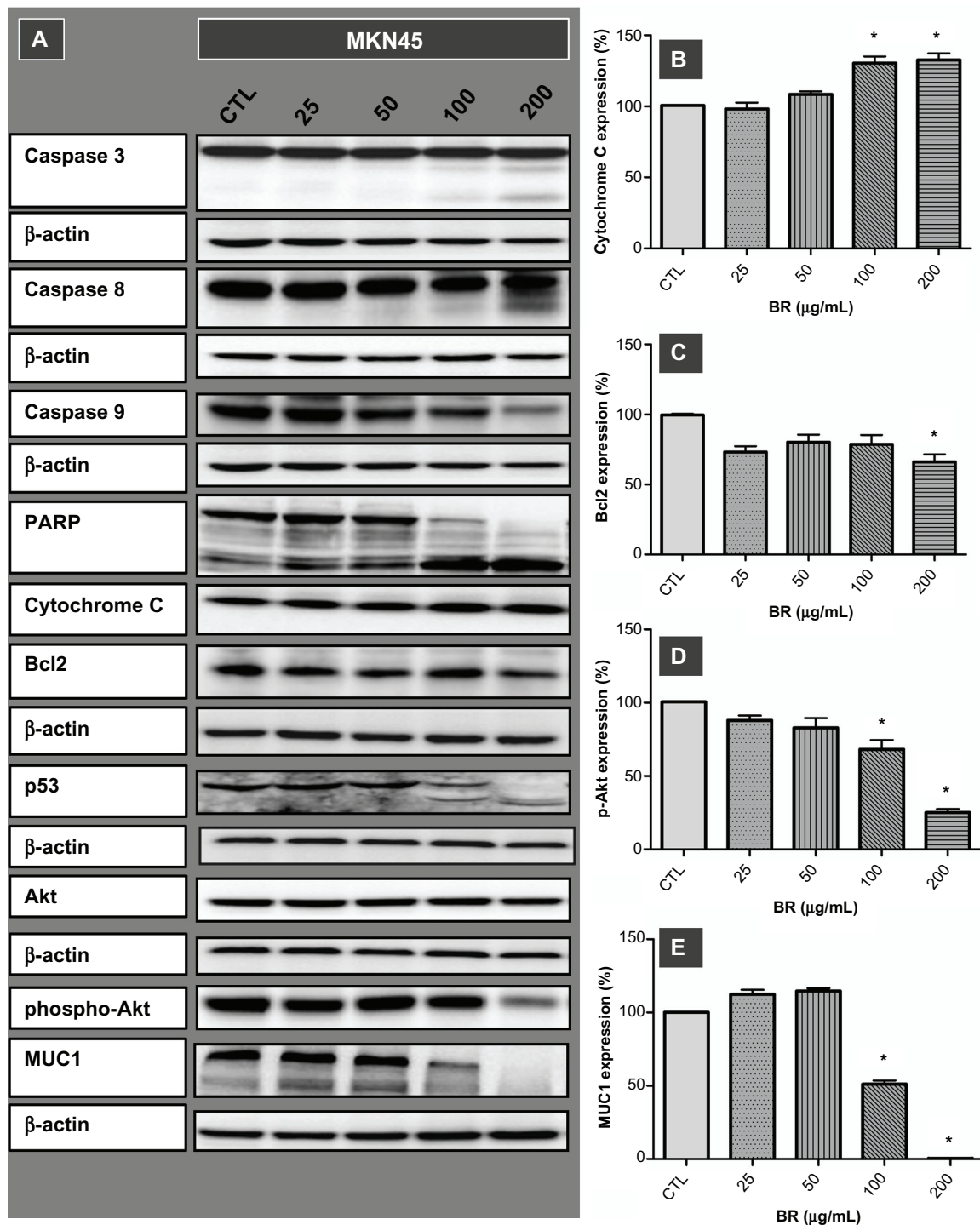


**Figure 1** Sulforhodamine B assay in MKN45 (A and B), KATO-III (C and D), HT29-5M21 (E and F), and HT29-5F12 (G and H) cells after 72 hours of treatment with bromelain concentrations ranging from 5 µg/mL to 600 µg/mL, and with different concentrations of cisplatin used as a positive control (shown as smaller graphs a, c, e and g). **Notes:** The results show a concentration-dependent inhibitory effect (left), with half maximal inhibitory concentration values ranging from 29 µg/mL to 142 µg/mL (right). Significant changes are marked by asterisks.

Sweden), Paroulek et al reported increased levels of the cytokeratin 18 protein, along with a large number of apoptotic cell bodies following bromelain treatment of GI-101A breast cancer cells.<sup>14</sup> They recently indicated a concentration-dependent increase in the activities of

caspase 9 and caspase 3 coinciding with elevation of cytokeratin 18 levels.<sup>17</sup>

An interesting feature of bromelain-induced apoptosis in our study was the cleavage of p53. Apart from the known anti-tumorigenic role of p53 as a sequence-specific transcription



**Figure 2** Western blot imaging (A) and densitometric quantification (B–E) for a range of proteins involved in apoptotic death of MKN45 cells treated for 72 hours with bromelain concentrations of 25, 50, 100, and 200 μg/mL.

**Notes:** Significant changes are marked by asterisks. Appearance of the caspase 3 and 8 subunits, withering of procaspase 9, cleavage of PARP and p53, overexpression of cytochrome C, attenuation of phospho-Akt and Bcl2, and removal of MUC1 implicate different molecular pathways in the ensuing cell death.

factor activating several proapoptotic genes, there is some evidence suggesting a direct, extranuclear apoptotic function of p53, activating so-called transcription-independent p53 apoptosis.<sup>18,19</sup> Leu et al showed that p53 could interact with Bak, a proapoptotic mitochondrial membrane protein,

resulting in release of cytochrome C from mitochondria.<sup>20</sup> Sayan et al demonstrated that p53 could be targeted and cleaved by caspases, generating two cytosolic fragments that translocate to the mitochondria and induce depolarization of the mitochondrial membrane.<sup>21</sup>

In our study, bromelain also exhibited an intriguing aspect of its anticancer function by eliminating the MUC1 oncoprotein, which could be of particular therapeutic importance. Being expressed as a transmembrane mucin in normal epithelial cells of various organs, MUC1 is overexpressed and aberrantly glycosylated in most carcinomas.<sup>22</sup> Of the 1.4 million tumors diagnosed each year in the US, about 900,000 show overexpression of MUC1. MUC1 is exploited by malignant cells to induce transformation and tumorigenicity. It also plays an important role in cancer cell survival, tumor invasion, and metastasis, which is why MUC1 has emerged as a particularly attractive target for the development of anticancer agents.<sup>23,24</sup>

Diminished expression of phospho-Akt, but not total Akt, represents another molecular event of bromelain-induced apoptosis in the present study. This might be due to at least two mechanisms, ie, bromelain modulation of upstream kinase versus phosphatase activity or bromelain enhancement of protein phosphatase activity, and thus reduced phosphorylation status of phospho-Akt. Given that constitutive activation of Akt via crucial phosphorylation events promotes survival of cancer cells as well as resistance to treatment,<sup>25</sup> inhibition of phosphorylation may play an important role in the cytotoxicity of bromelain. In our study, bromelain appeared to impair survival of cancer cells by inhibiting Akt signaling and attenuating Bcl2 and MUC1.

## Conclusion

Here, we report the anticancer effects of bromelain, a pineapple stem extract, in a panel of gastrointestinal cancer cell lines in vitro. Treatment with bromelain inhibited the growth and proliferation of cancer cells. Bromelain not only appeared to activate caspase-dependent apoptotic pathways and transcription-independent p53 apoptosis, but also induced concomitant inhibition of cell survival. The role of bromelain in removing MUC1 oncoprotein and attenuating phospho-Akt could be of particular therapeutic importance and warrants further investigation.

## Disclosure

The authors report no conflicts of interest in this work.

## References

1. Taussig SJ, Batkin S. Bromelain, the enzyme complex of pineapple (*Ananas comosus*) and its clinical application. An update. *J Ethnopharmacol*. 1988;22(2):191–203.
2. Houck JC, Chang CM, Klein G. Isolation of an effective debriding agent from the stems of pineapple plants. *Int J Tissue React*. 1983;5(2):125–134.
3. Maurer HR. Bromelain: biochemistry, pharmacology and medical use. *Cell Mol Life Sci*. 2001;58(9):1234–1245.
4. Hale LP, Greer PK, Trinh CT, James CL. Proteinase activity and stability of natural bromelain preparations. *Int Immunopharmacol*. 2005;5(4):783–793.
5. Bromelain. Monograph. *Altern Med Rev*. 2010;15(4):361–368.
6. Chobotova K, Vernallis AB, Majid FA. Bromelain's activity and potential as an anti-cancer agent: current evidence and perspectives. *Cancer Lett*. 2010;290(2):148–156.
7. Ferlay J, Shin HR, Bray F, Forman D, Mathers C, Parkin DM. Estimates of worldwide burden of cancer in 2008: GLOBOCAN 2008. *Int J Cancer*. 2010;127(12):2893–2917.
8. Jemal A, Bray F, Center MM, Ferlay J, Ward E, Forman D. Global cancer statistics. *CA Cancer J Clin*. 2011;61(2):69–90.
9. Taussig SJ, Szekerczes J, Batkin S. Inhibition of tumour growth in vitro by bromelain, an extract of the pineapple plant (*Ananas comosus*). *Planta Med*. 1985;51(6):538–539.
10. Tysnes BB, Maurer HR, Porwol T, Probst B, Bjerkvig R, Hoover F. Bromelain reversibly inhibits invasive properties of glioma cells. *Neoplasia*. 2001;3(6):469–479.
11. Beuth J, Braun JM. Modulation of murine tumor growth and colonization by bromelain, an extract of the pineapple plant (*Ananas comosum* L.). *In Vivo*. 2005;19(2):483–485.
12. Baez R, Lopes MT, Salas CE, Hernandez M. In vivo antitumoral activity of stem pineapple (*Ananas comosus*) bromelain. *Planta Med*. 2007;73(13):1377–1383.
13. Kalra N, Bhui K, Roy P, et al. Regulation of p53, nuclear factor kappaB and cyclooxygenase-2 expression by bromelain through targeting mitogen-activated protein kinase pathway in mouse skin. *Toxicol Appl Pharmacol*. 2008;226(1):30–37.
14. Paroulek AF, Jaffe M, Rathinavelu A. The effects of the herbal enzyme bromelain against breast cancer cell line GI101A. *FASEB J*. 2009;23:LB18.
15. Bhui K, Prasad S, George J, Shukla Y. Bromelain inhibits COX-2 expression by blocking the activation of MAPK regulated NF-kappa B against skin tumor-initiation triggering mitochondrial death pathway. *Cancer Lett*. 2009;282(2):167–176.
16. Bhui K, Tyagi S, Srivastava AK, et al. Bromelain inhibits nuclear factor kappa-B translocation, driving human epidermoid carcinoma A431 and melanoma A375 cells through G(2)/M arrest to apoptosis. *Mol Carcinog*. 2012;51(3):231–243.
17. Dhandayuthapani S, Perez HD, Paroulek A, et al. Bromelain-induced apoptosis in GI-101A breast cancer cells. *J Med Food*. 2012;15(4):344–349.
18. Chipuk JE, Green DR. p53's believe it or not: lessons on transcription-independent death. *J Clin Immunol*. 2003;23(5):355–361.
19. Speidel D. Transcription-independent p53 apoptosis: an alternative route to death. *Trends Cell Biol*. 2010;20(1):14–24.
20. Leu JI, Dumont P, Hafey M, Murphy ME, George DL. Mitochondrial p53 activates Bak and causes disruption of a Bak-Mcl1 complex. *Nat Cell Biol*. 2004;6(5):443–450.
21. Sayan BS, Sayan AE, Knight RA, Melino G, Cohen GM. p53 is cleaved by caspases generating fragments localizing to mitochondria. *J Biol Chem*. 2006;281(19):13566–13573.
22. Yonezawa S, Higashi M, Yamada N, et al. Mucins in human neoplasms: clinical pathology, gene expression and diagnostic application. *Pathol Int*. 2011;61(12):697–716.
23. Kufe DW. Mucins in cancer: function, prognosis and therapy. *Nat Rev Cancer*. 2009;9(12):874–885.
24. Kufe DW. Functional targeting of the MUC1 oncogene in human cancers. *Cancer Biol Ther*. 2009;8(13):1197–1203.
25. LoPiccolo J, Granville CA, Gills JJ, Dennis PA. Targeting Akt in cancer therapy. *Anticancer Drugs*. 2007;18(8):861–874.

**OncoTargets and Therapy**

Dovepress

**Publish your work in this journal**

OncoTargets and Therapy is an international, peer-reviewed, open access journal focusing on the pathological basis of all cancers, potential targets for therapy and treatment protocols employed to improve the management of cancer patients. The journal also focuses on the impact of management programs and new therapeutic agents and protocols on

Submit your manuscript here: <http://www.dovepress.com/oncotargets-and-therapy-journal>

patient perspectives such as quality of life, adherence and satisfaction. The manuscript management system is completely online and includes a very quick and fair peer-review system, which is all easy to use. Visit <http://www.dovepress.com/testimonials.php> to read real quotes from published authors.